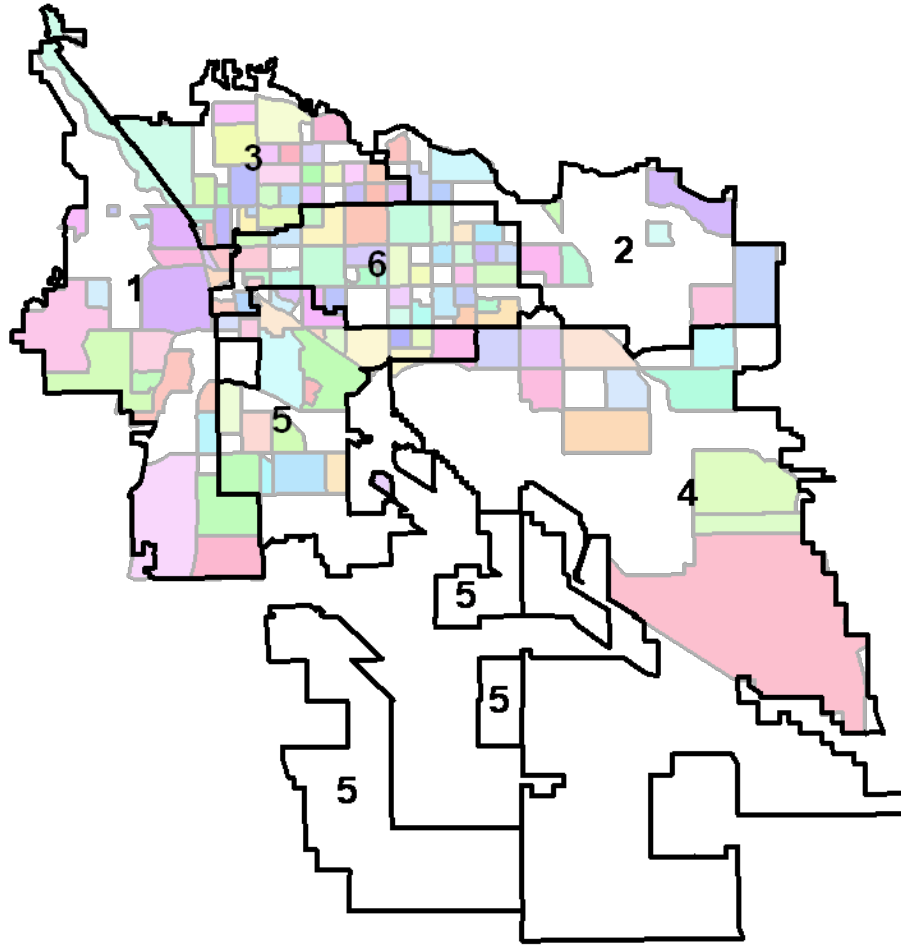


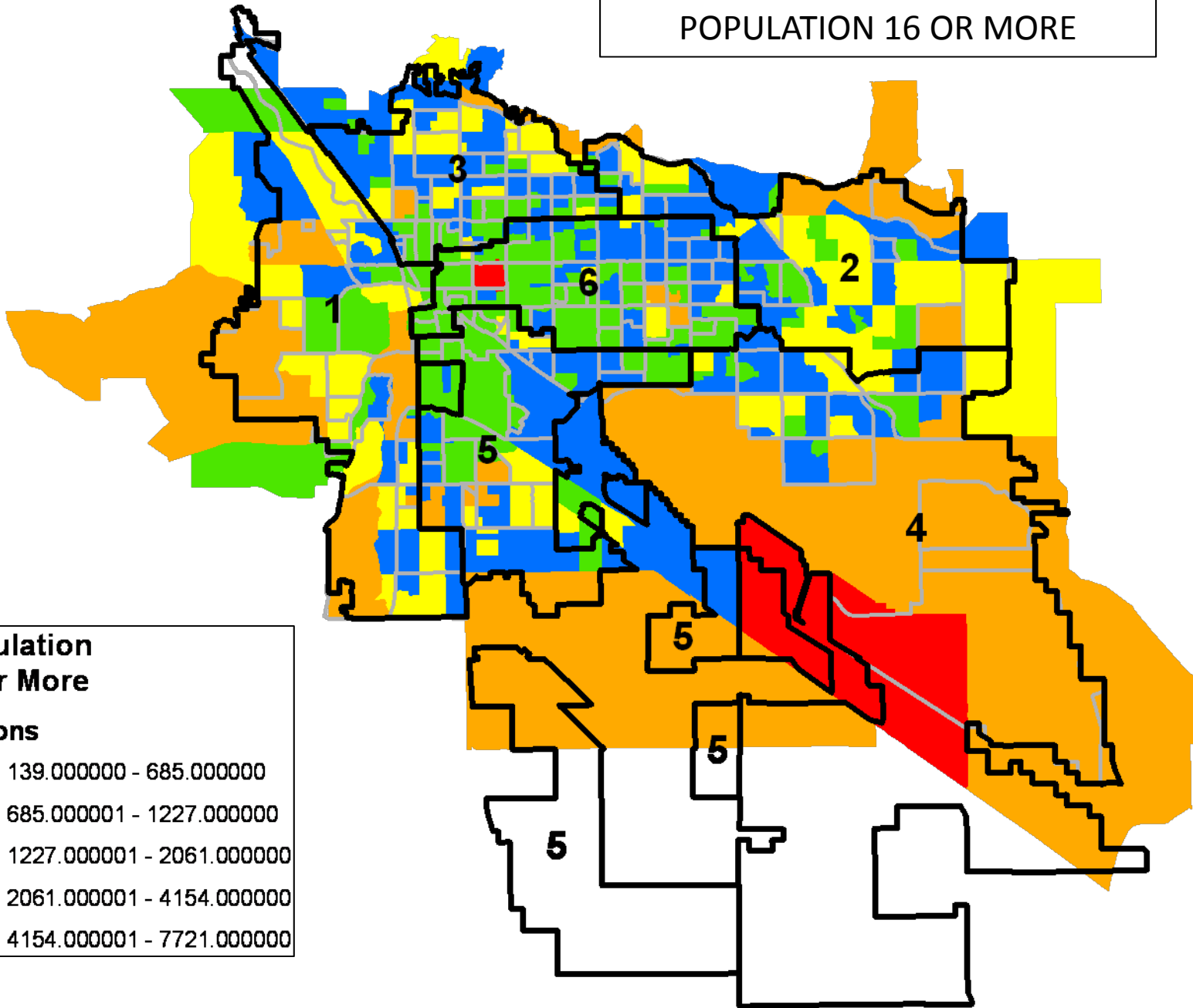
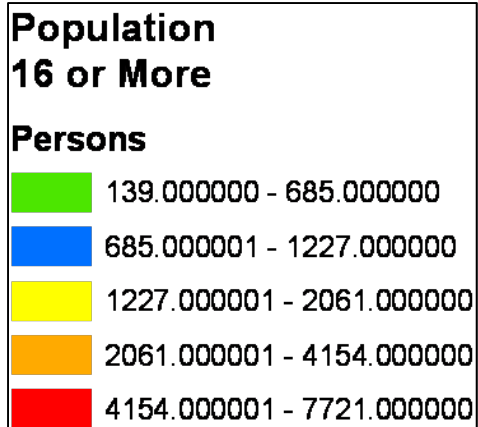
# TUCSON EMPLOYMENT INDICATORS



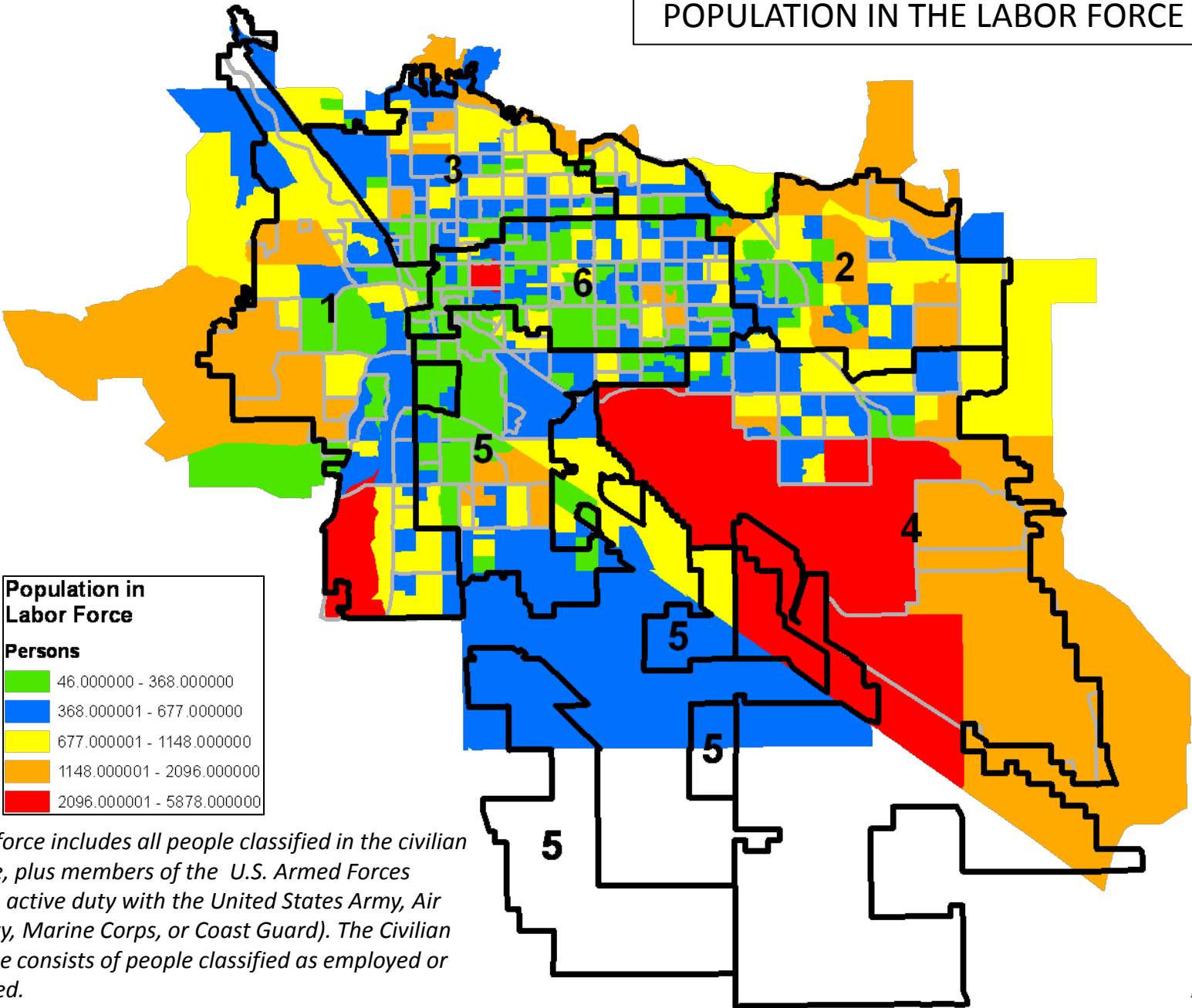
YES Network

Connecting Communities Foundation

POPULATION 16 OR MORE

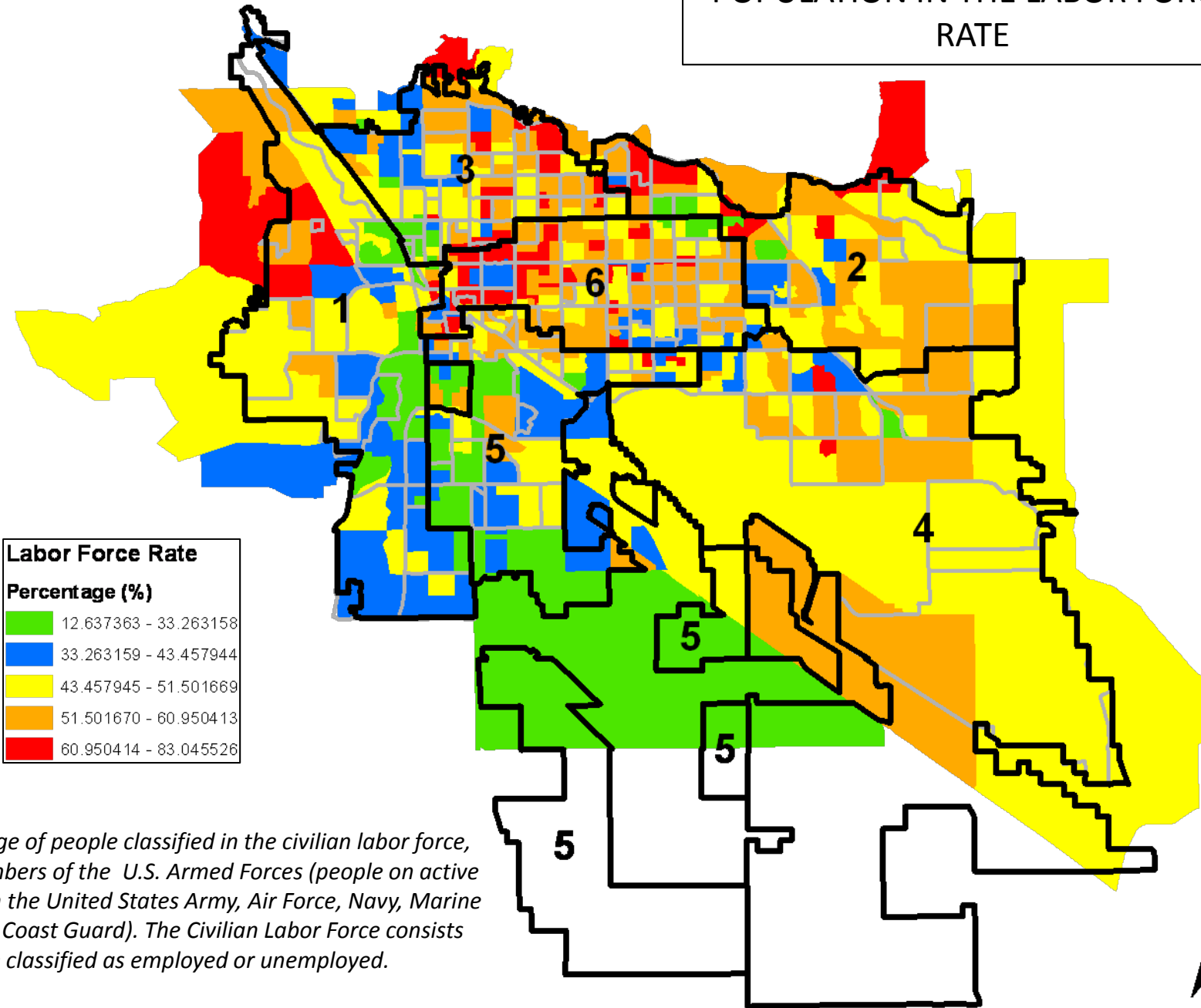


# POPULATION IN THE LABOR FORCE



*The labor force includes all people classified in the civilian labor force, plus members of the U.S. Armed Forces (people on active duty with the United States Army, Air Force, Navy, Marine Corps, or Coast Guard). The Civilian Labor Force consists of people classified as employed or unemployed.*

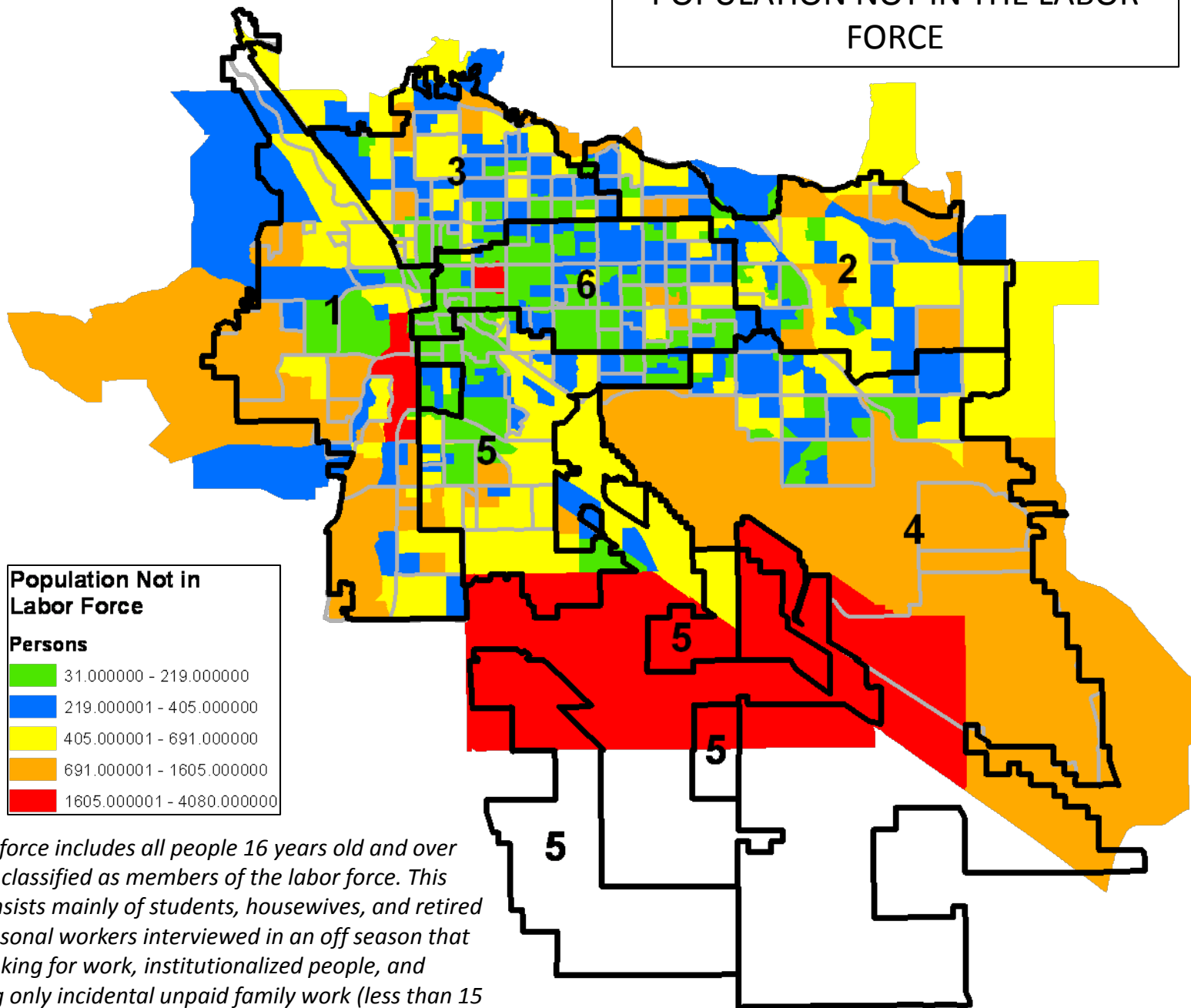
# POPULATION IN THE LABOR FORCE RATE



| Labor Force Rate |                       |
|------------------|-----------------------|
| Percentage (%)   |                       |
| Green            | 12.637363 - 33.263158 |
| Blue             | 33.263159 - 43.457944 |
| Yellow           | 43.457945 - 51.501669 |
| Orange           | 51.501670 - 60.950413 |
| Red              | 60.950414 - 83.045526 |

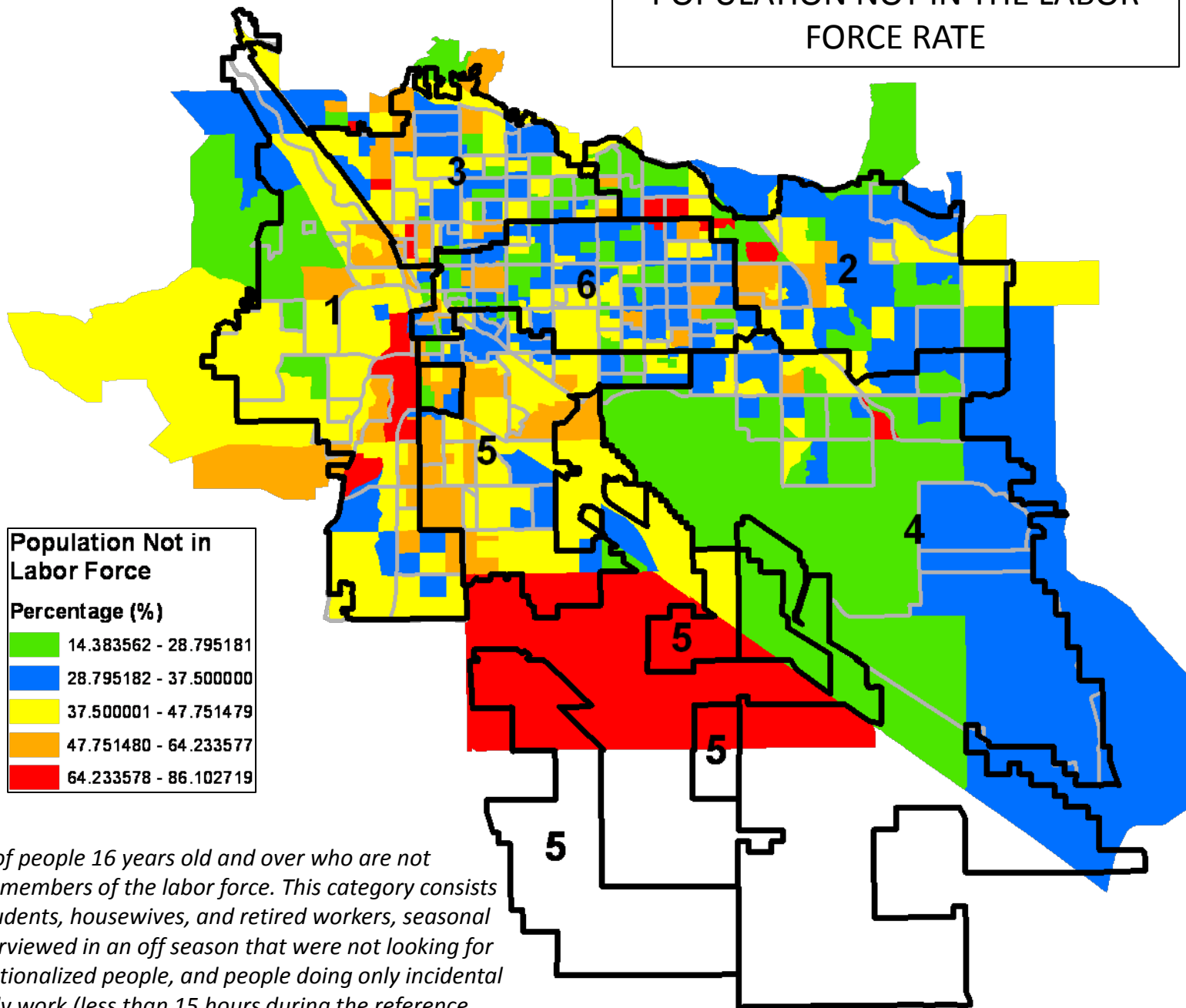
*Percentage of people classified in the civilian labor force, plus members of the U.S. Armed Forces (people on active duty with the United States Army, Air Force, Navy, Marine Corps, or Coast Guard). The Civilian Labor Force consists of people classified as employed or unemployed.*

# POPULATION NOT IN THE LABOR FORCE



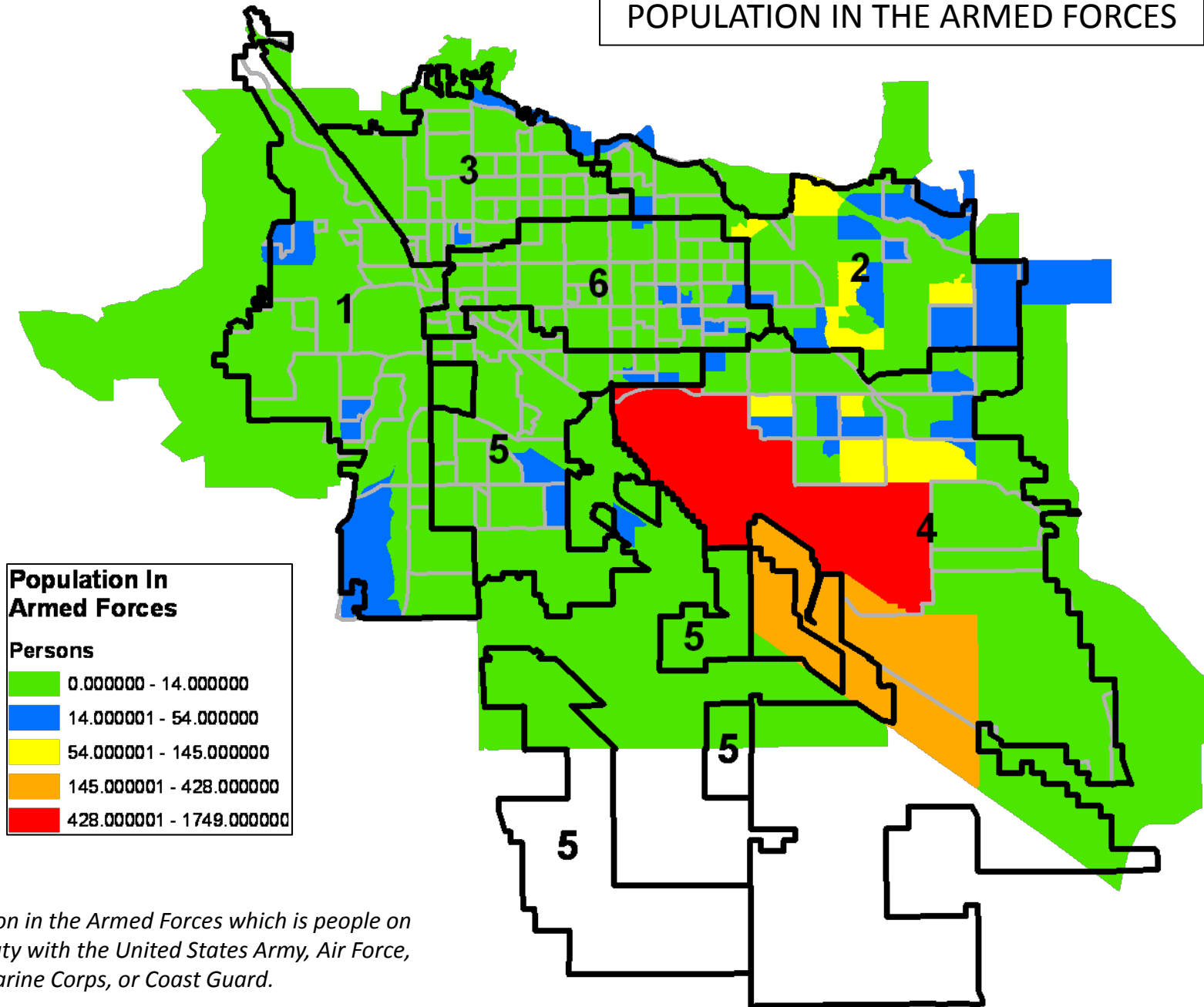
*Not in labor force includes all people 16 years old and over who are not classified as members of the labor force. This category consists mainly of students, housewives, and retired workers, seasonal workers interviewed in an off season that were not looking for work, institutionalized people, and people doing only incidental unpaid family work (less than 15 hours during the reference week).*

# POPULATION NOT IN THE LABOR FORCE RATE

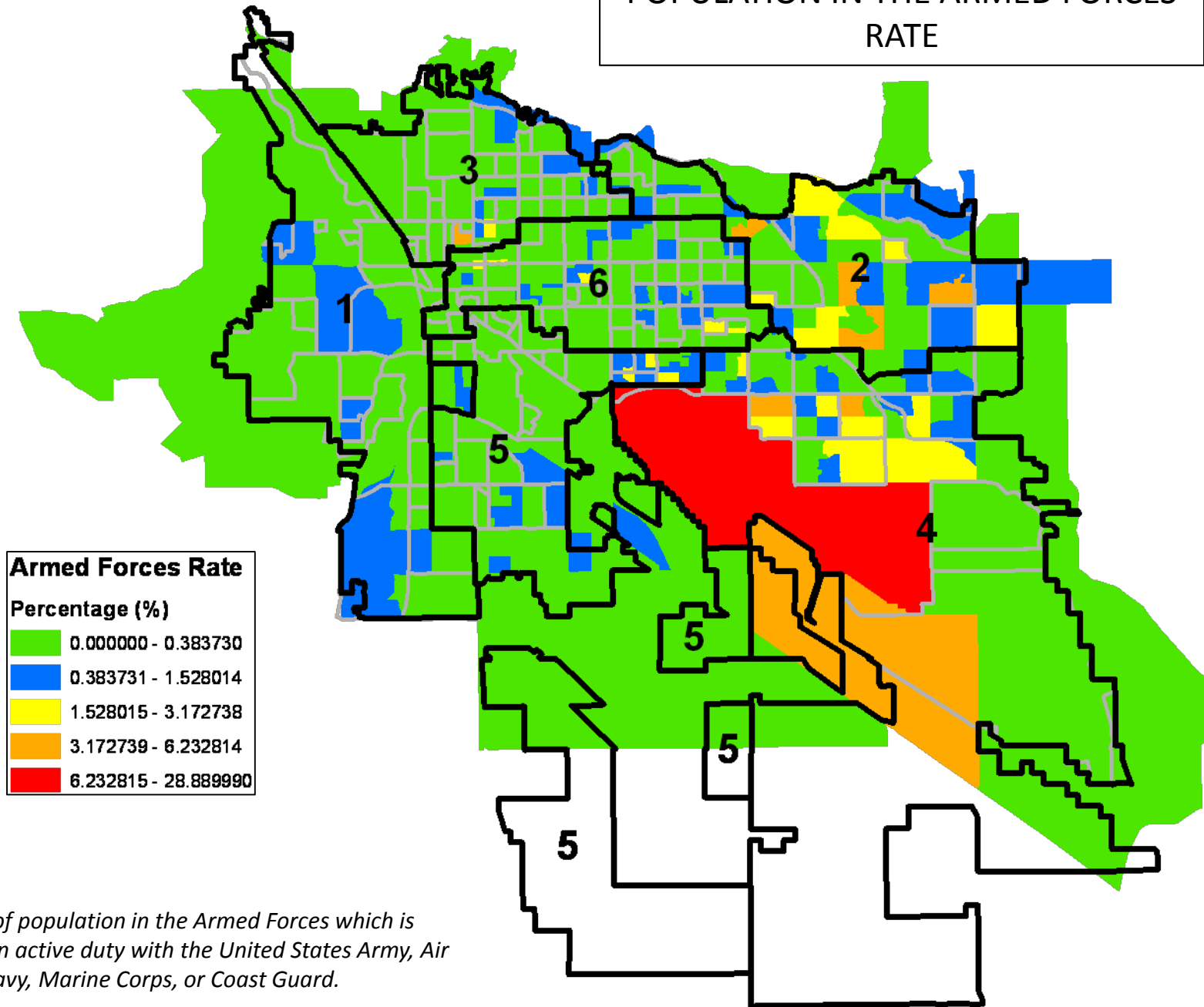


*Percentage of people 16 years old and over who are not classified as members of the labor force. This category consists mainly of students, housewives, and retired workers, seasonal workers interviewed in an off season that were not looking for work, institutionalized people, and people doing only incidental unpaid family work (less than 15 hours during the reference week).*

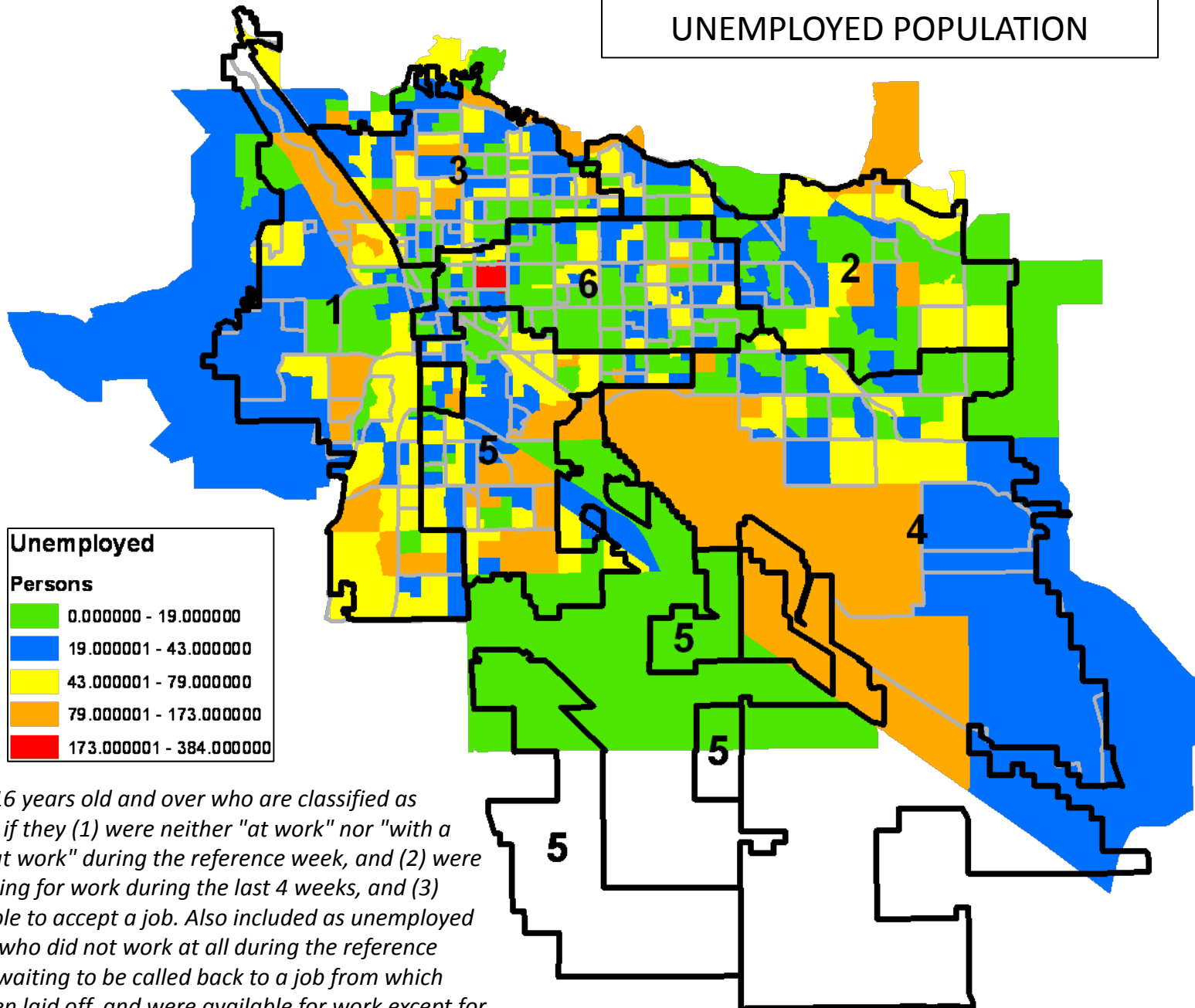
# POPULATION IN THE ARMED FORCES



# POPULATION IN THE ARMED FORCES RATE

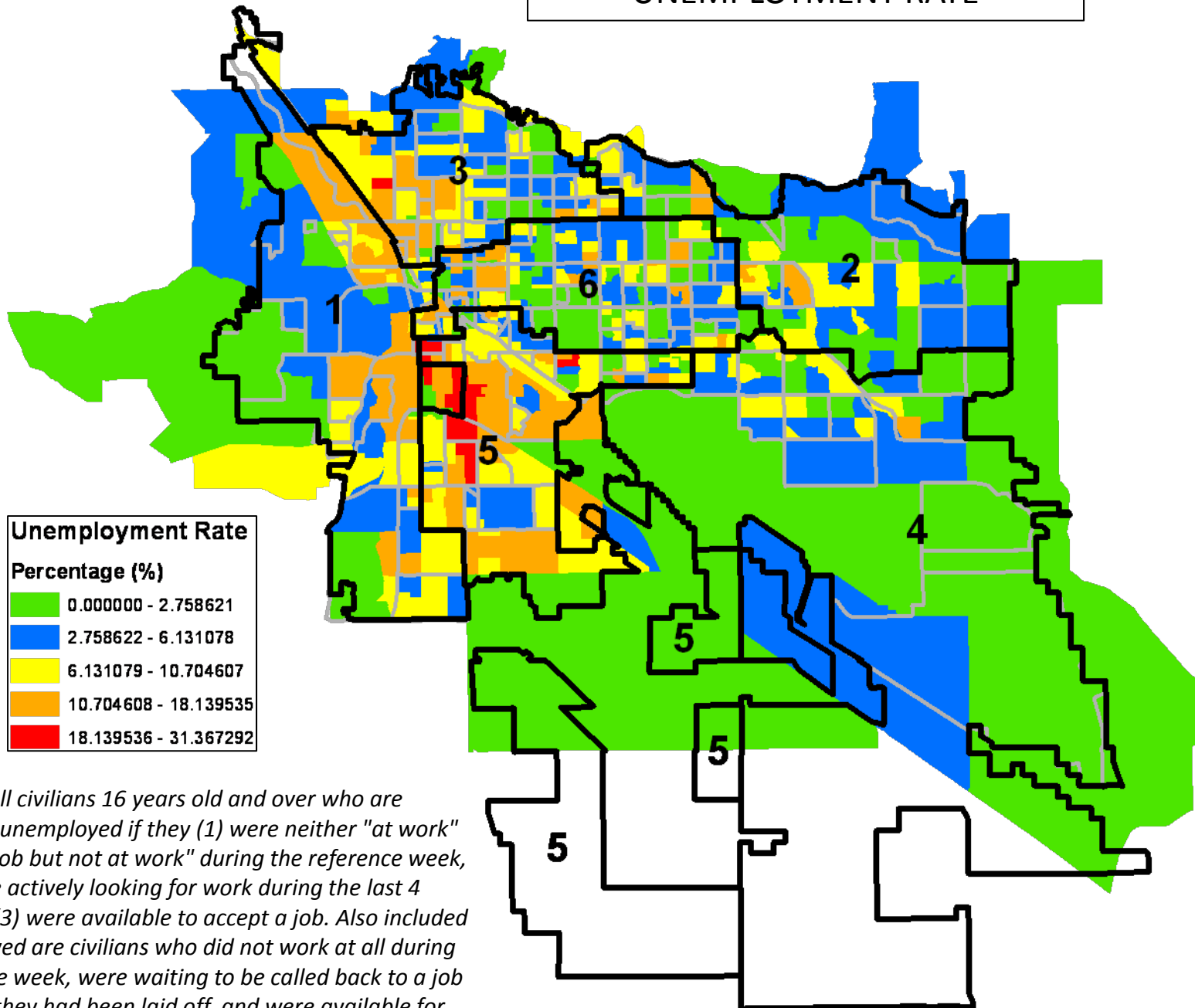


# UNEMPLOYED POPULATION



All civilians 16 years old and over who are classified as unemployed if they (1) were neither "at work" nor "with a job but not at work" during the reference week, and (2) were actively looking for work during the last 4 weeks, and (3) were available to accept a job. Also included as unemployed are civilians who did not work at all during the reference week, were waiting to be called back to a job from which they had been laid off, and were available for work except for temporary illness.

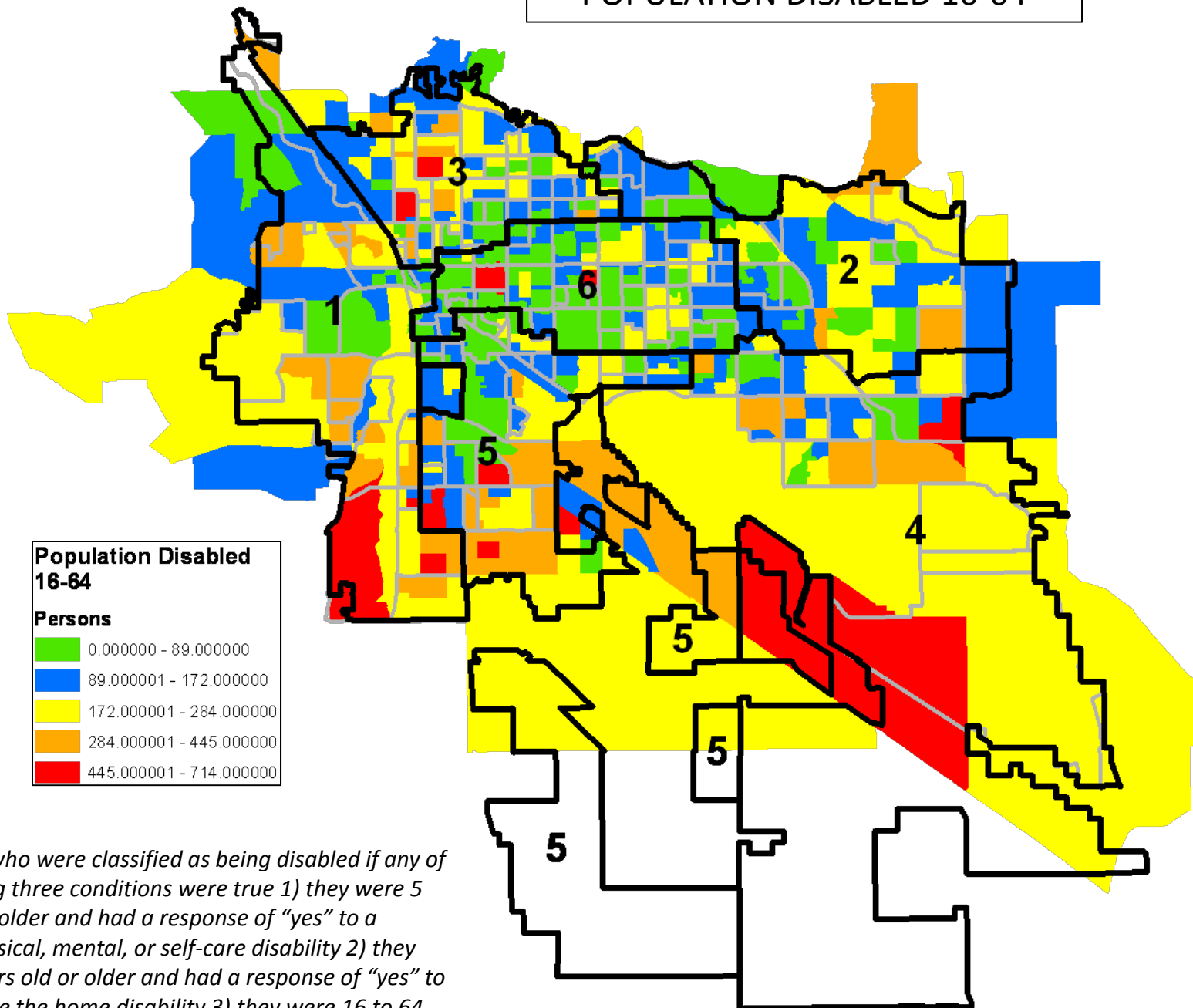
# UNEMPLOYMENT RATE



| Unemployment Rate                     |                       |
|---------------------------------------|-----------------------|
| Percentage (%)                        |                       |
| <span style="color: green;">■</span>  | 0.000000 - 2.758621   |
| <span style="color: blue;">■</span>   | 2.758622 - 6.131078   |
| <span style="color: yellow;">■</span> | 6.131079 - 10.704607  |
| <span style="color: orange;">■</span> | 10.704608 - 18.139535 |
| <span style="color: red;">■</span>    | 18.139536 - 31.367292 |

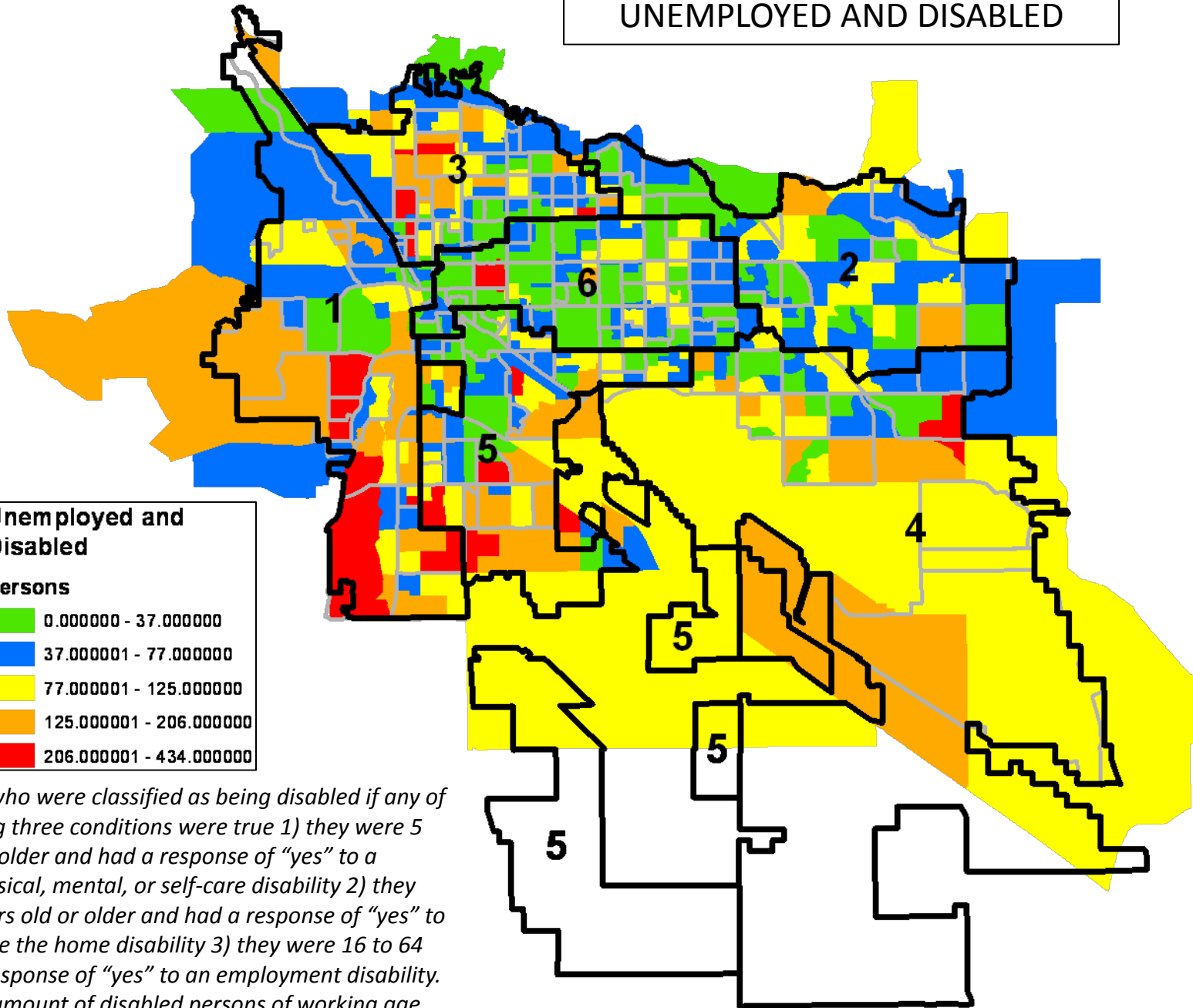
*Percent of all civilians 16 years old and over who are classified as unemployed if they (1) were neither "at work" nor "with a job but not at work" during the reference week, and (2) were actively looking for work during the last 4 weeks, and (3) were available to accept a job. Also included as unemployed are civilians who did not work at all during the reference week, were waiting to be called back to a job from which they had been laid off, and were available for work except for temporary illness.*

# POPULATION DISABLED 16-64



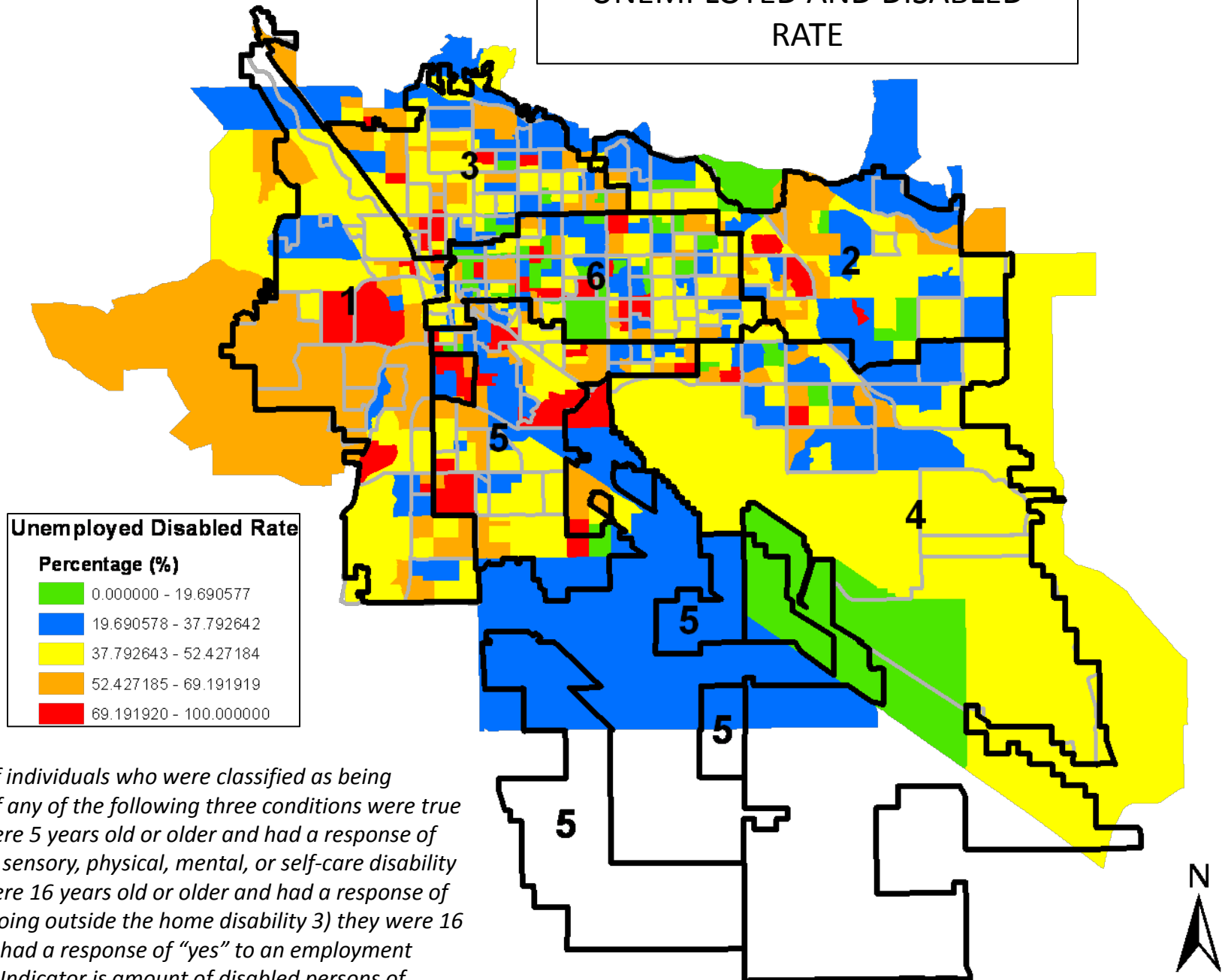
*Individuals who were classified as being disabled if any of the following three conditions were true 1) they were 5 years old or older and had a response of "yes" to a sensory, physical, mental, or self-care disability 2) they were 16 years old or older and had a response of "yes" to going outside the home disability 3) they were 16 to 64 and had a response of "yes" to an employment disability.*

# UNEMPLOYED AND DISABLED

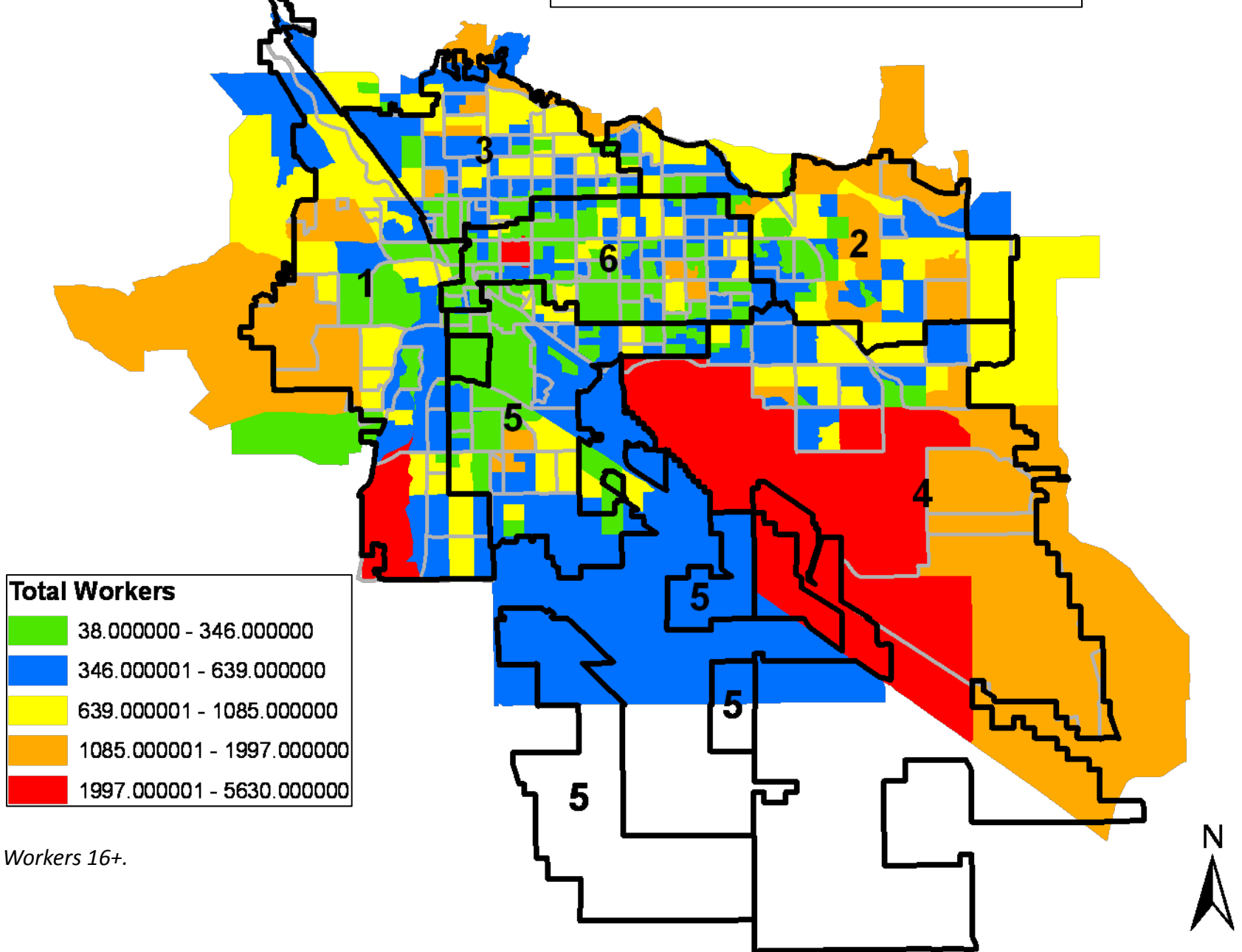


Individuals who were classified as being disabled if any of the following three conditions were true 1) they were 5 years old or older and had a response of "yes" to a sensory, physical, mental, or self-care disability 2) they were 16 years old or older and had a response of "yes" to going outside the home disability 3) they were 16 to 64 and had a response of "yes" to an employment disability. Indicator is amount of disabled persons of working age that are not employed.

# UNEMPLOYED AND DISABLED RATE

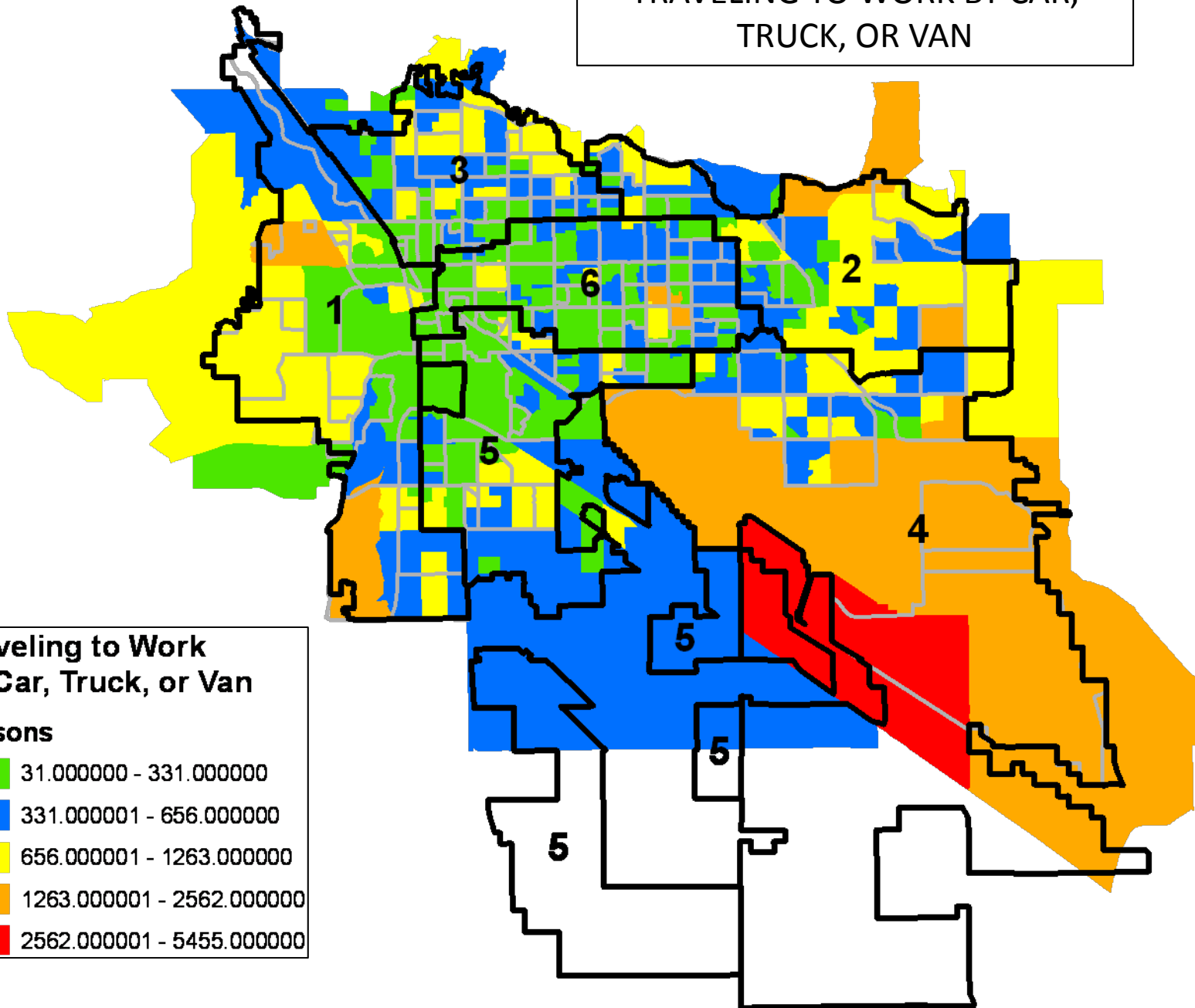
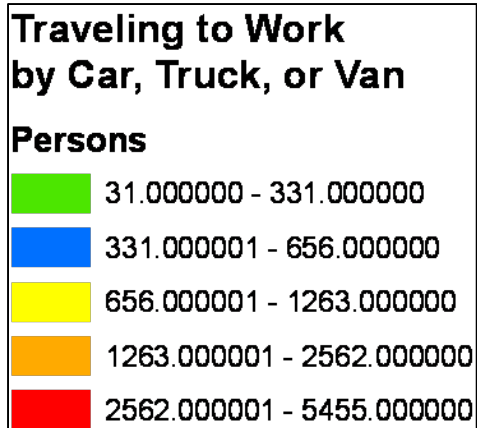


# TOTAL WORKERS



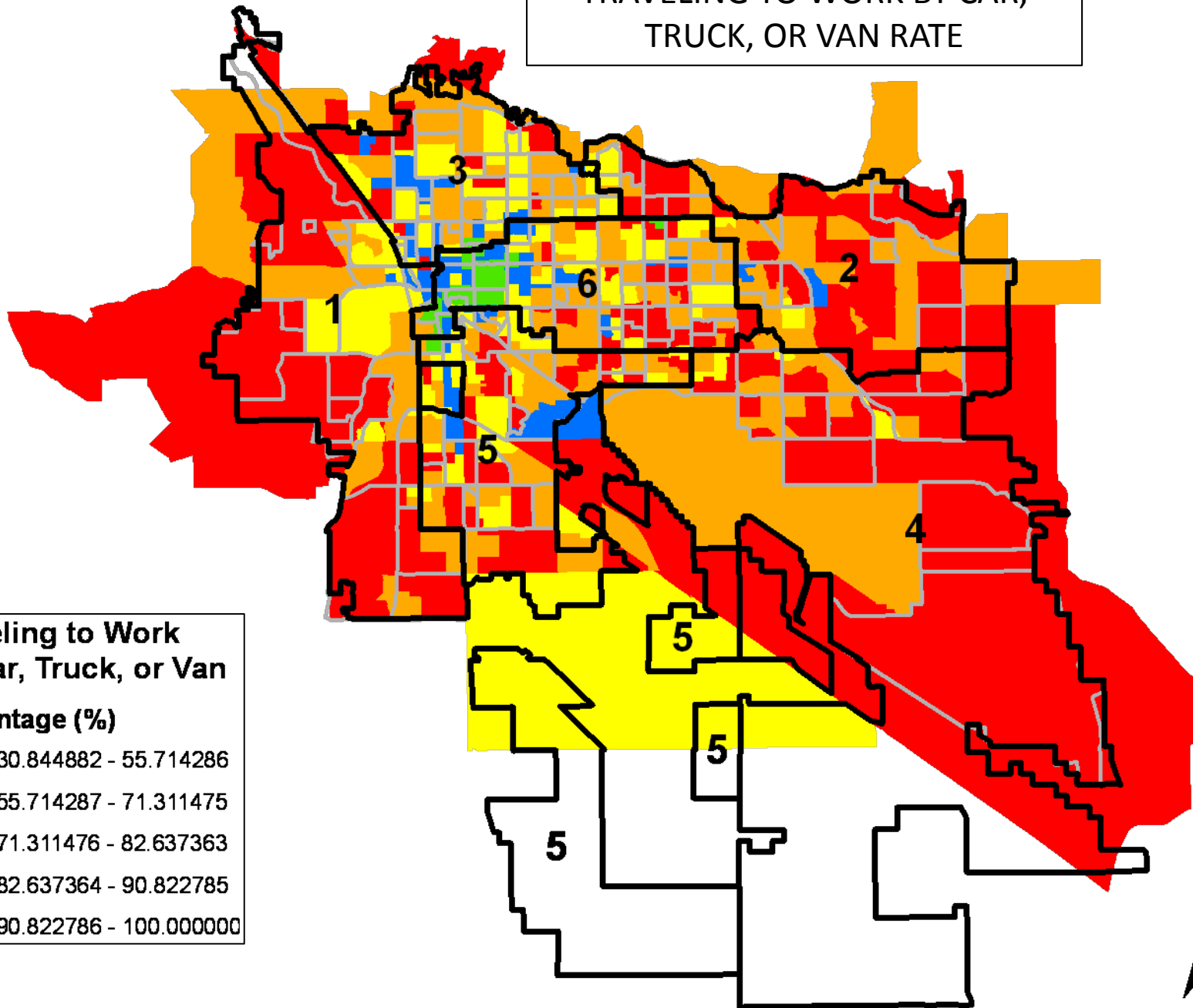
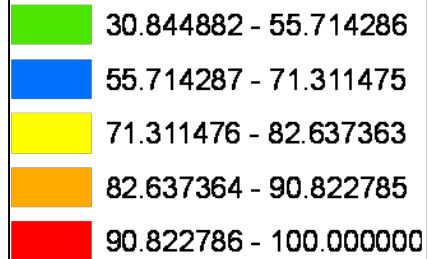
Total Workers 16+.

TRAVELING TO WORK BY CAR,  
TRUCK, OR VAN

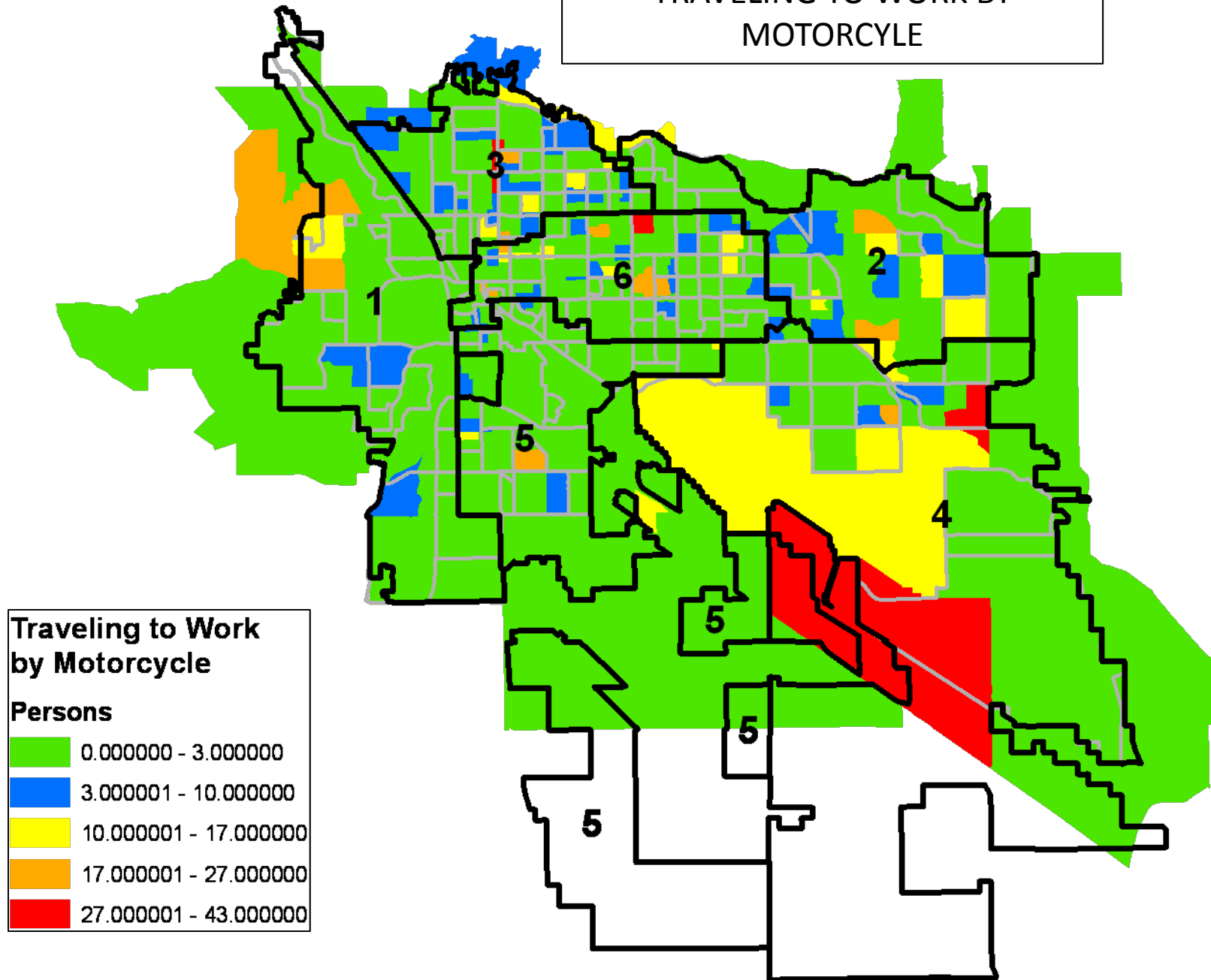


TRAVELING TO WORK BY CAR,  
TRUCK, OR VAN RATE

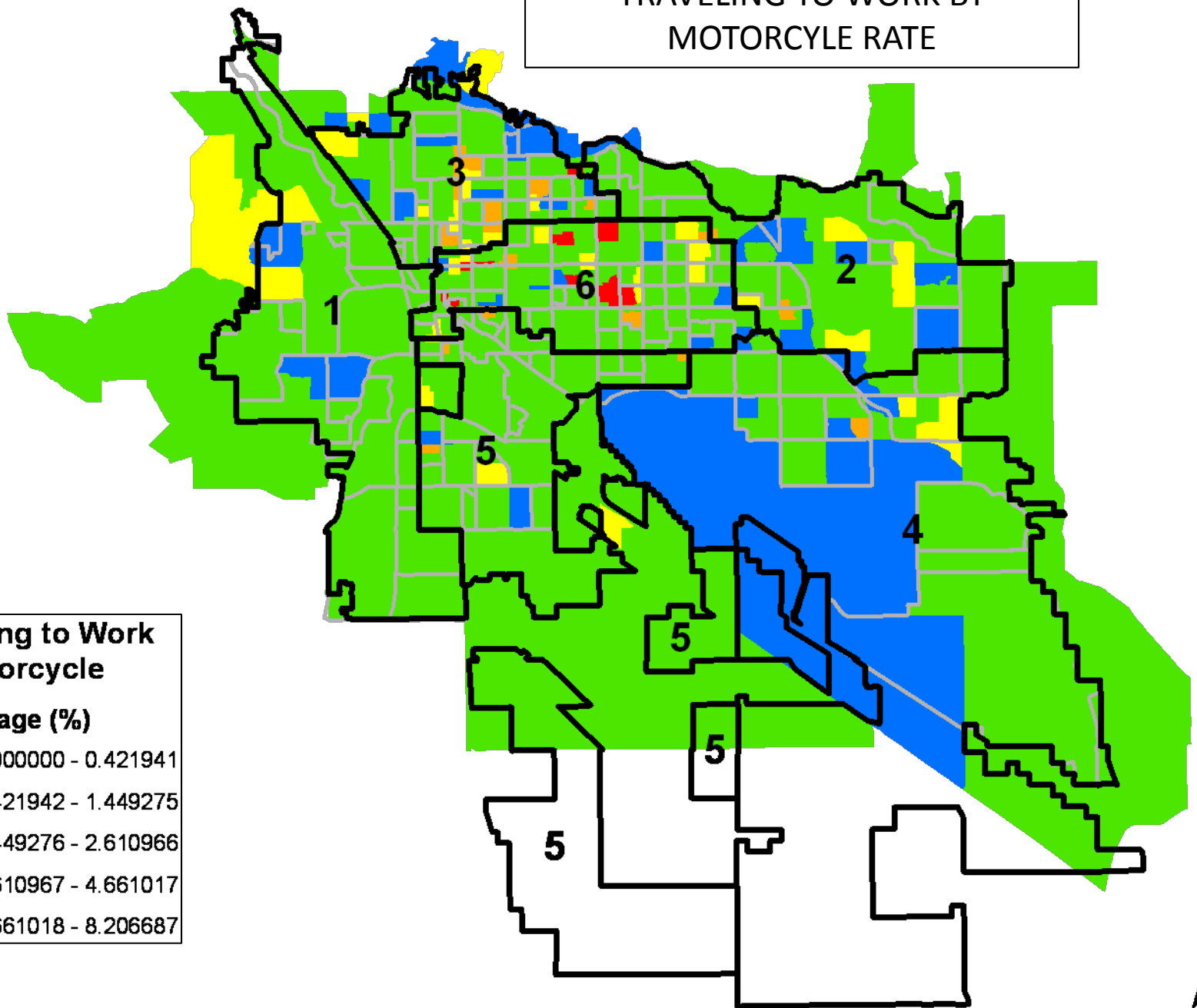
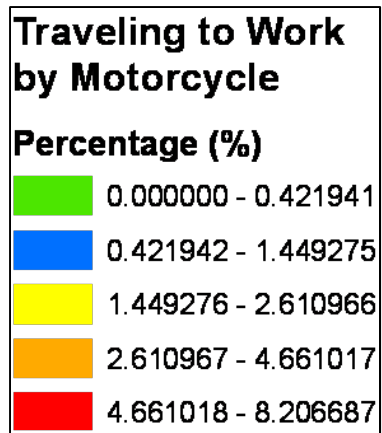
Traveling to Work  
by Car, Truck, or Van  
Percentage (%)



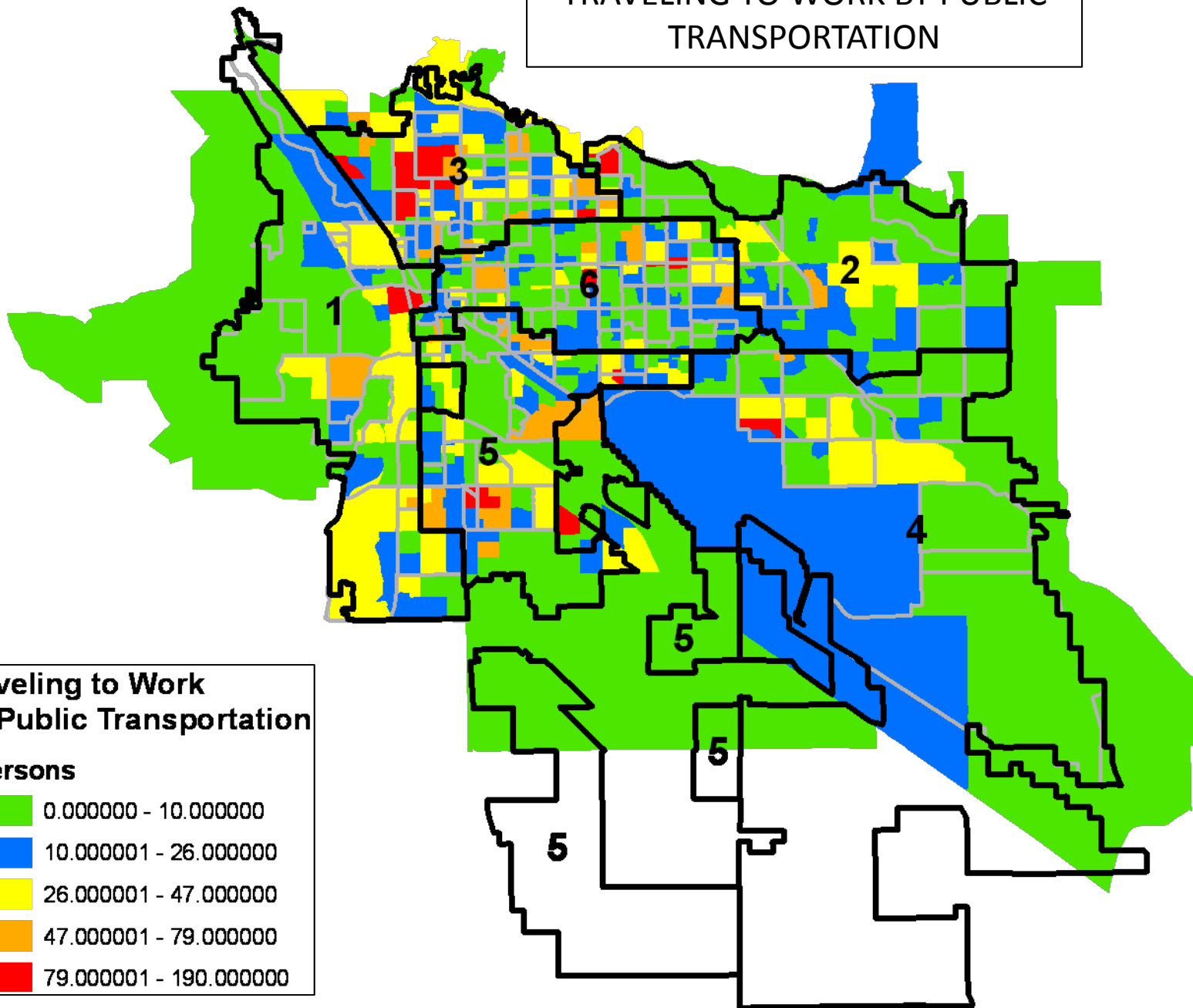
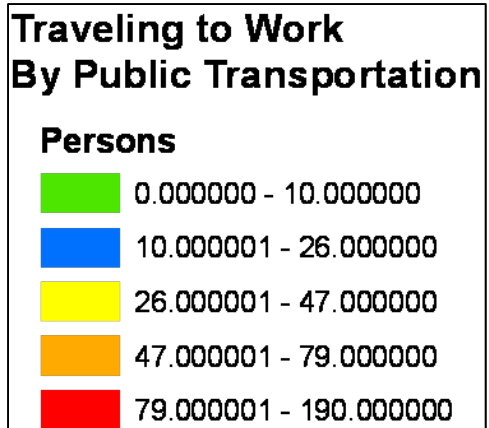
# TRAVELING TO WORK BY MOTORCYCLE



# TRAVELING TO WORK BY MOTORCYCLE RATE



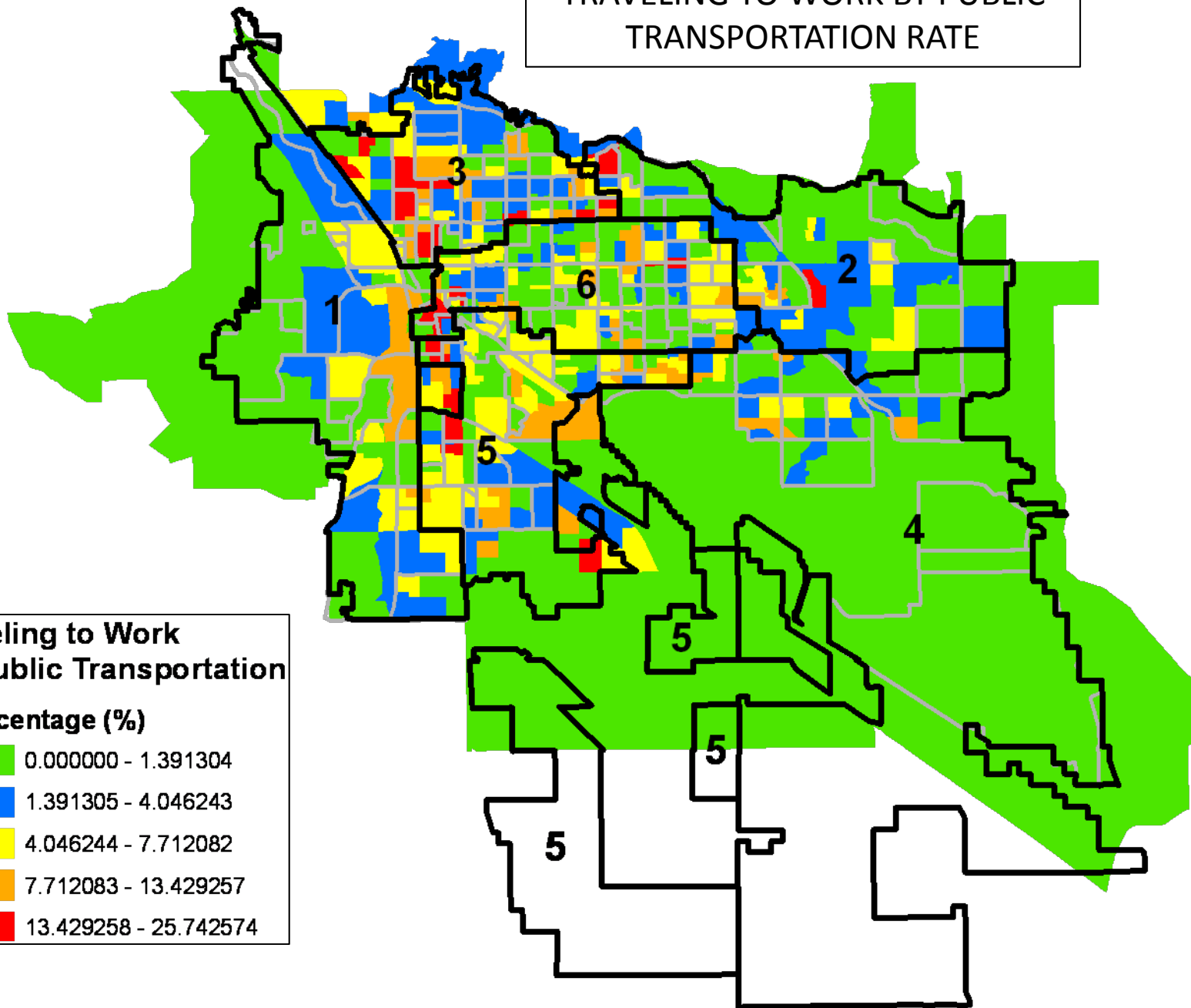
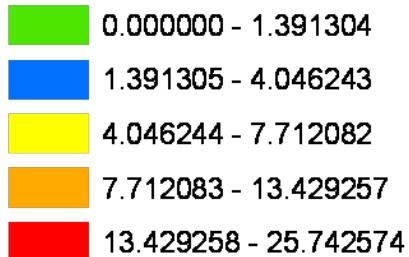
# TRAVELING TO WORK BY PUBLIC TRANSPORTATION



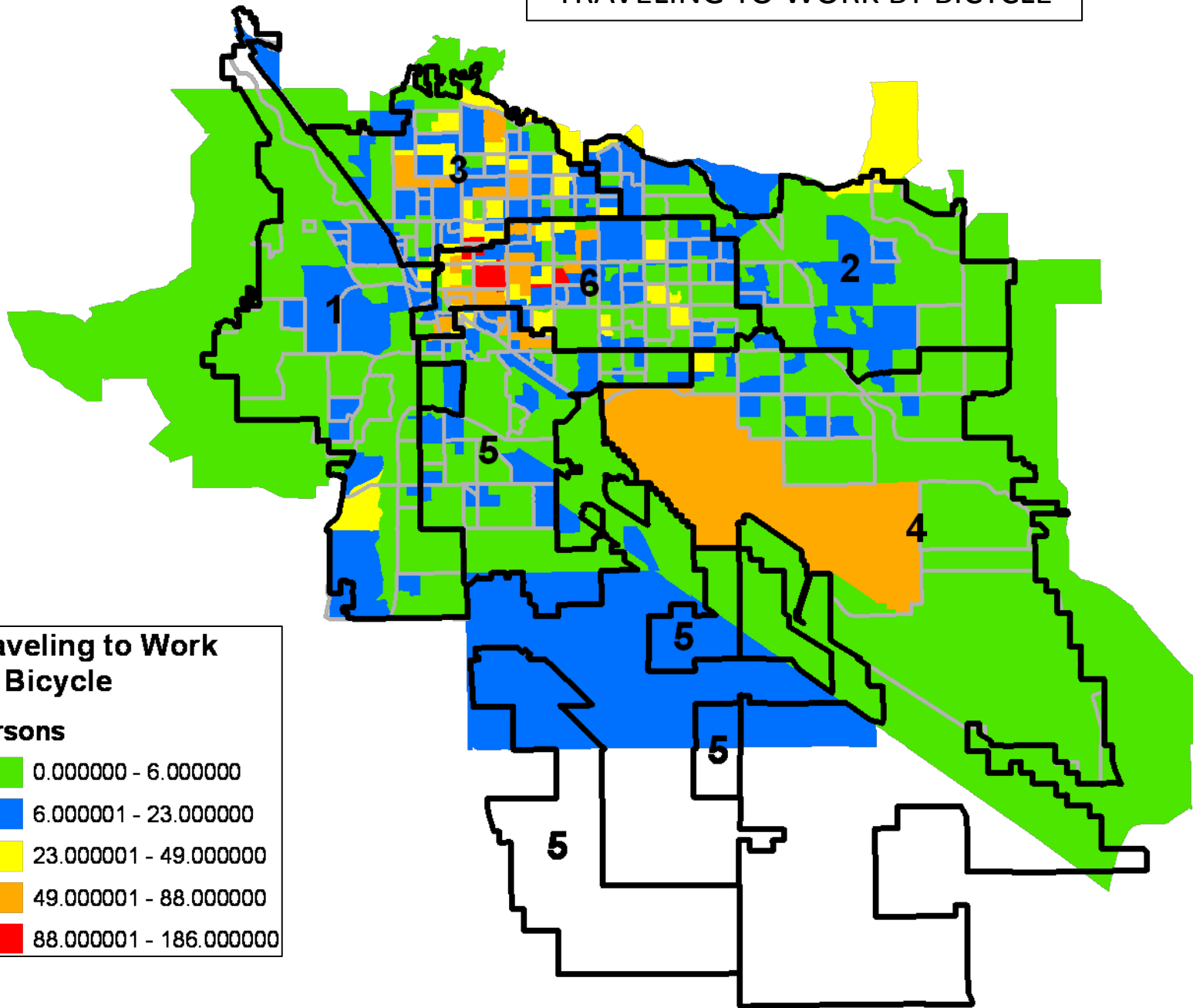
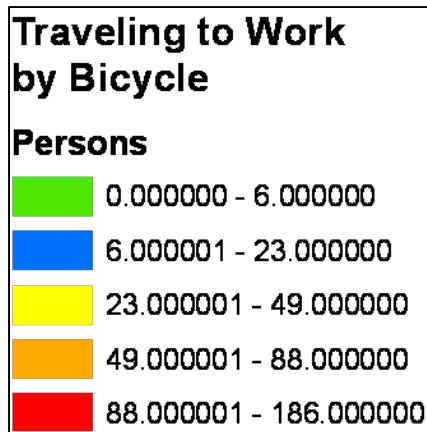
# TRAVELING TO WORK BY PUBLIC TRANSPORTATION RATE

## Traveling to Work By Public Transportation

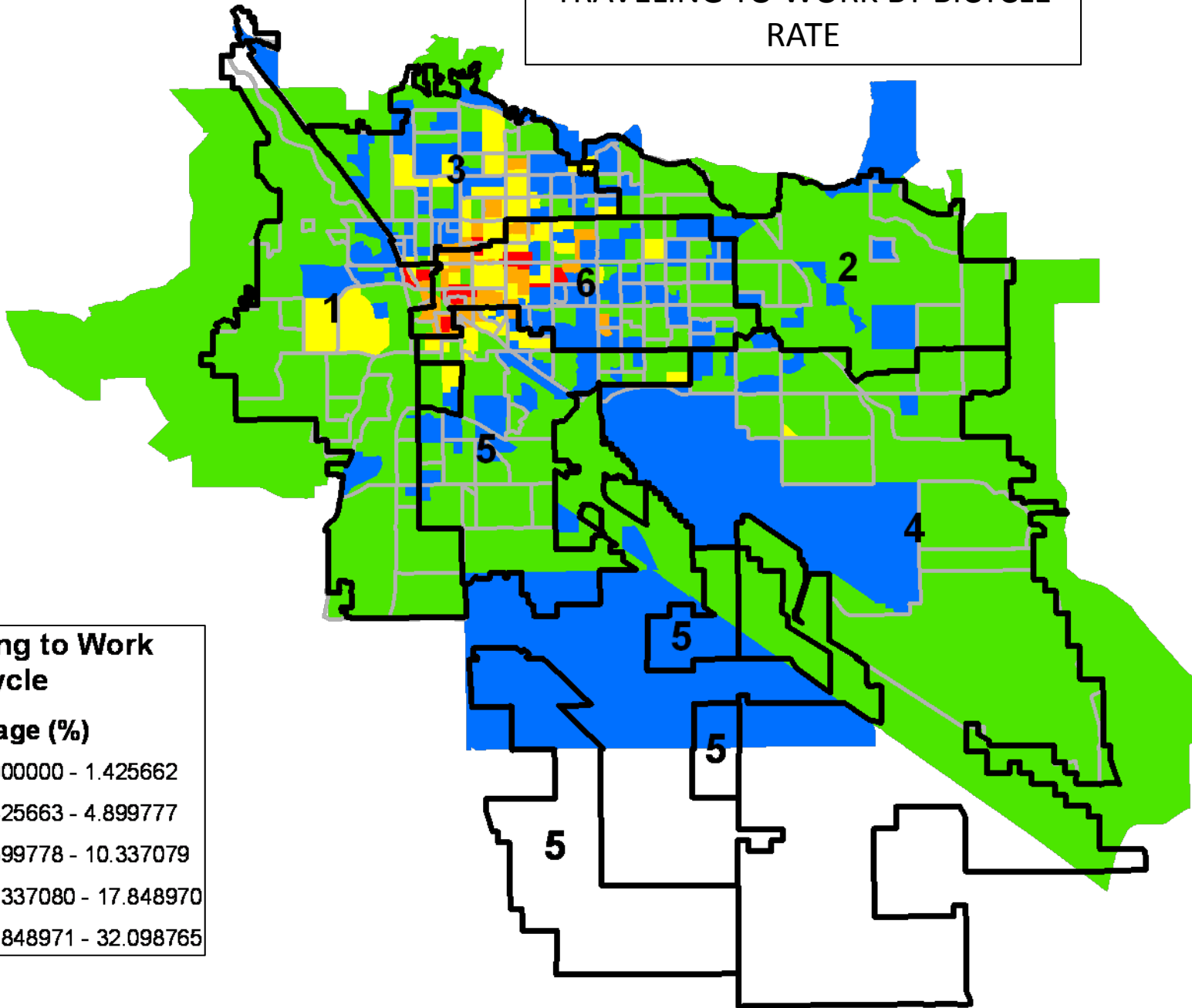
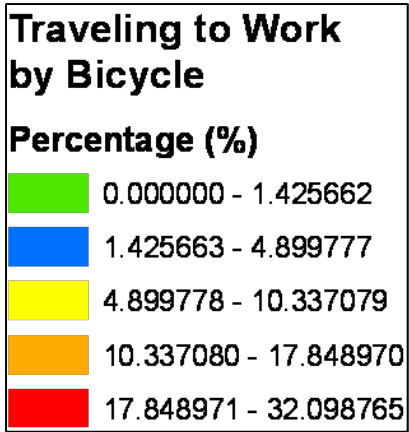
### Percentage (%)



# TRAVELING TO WORK BY BICYCLE

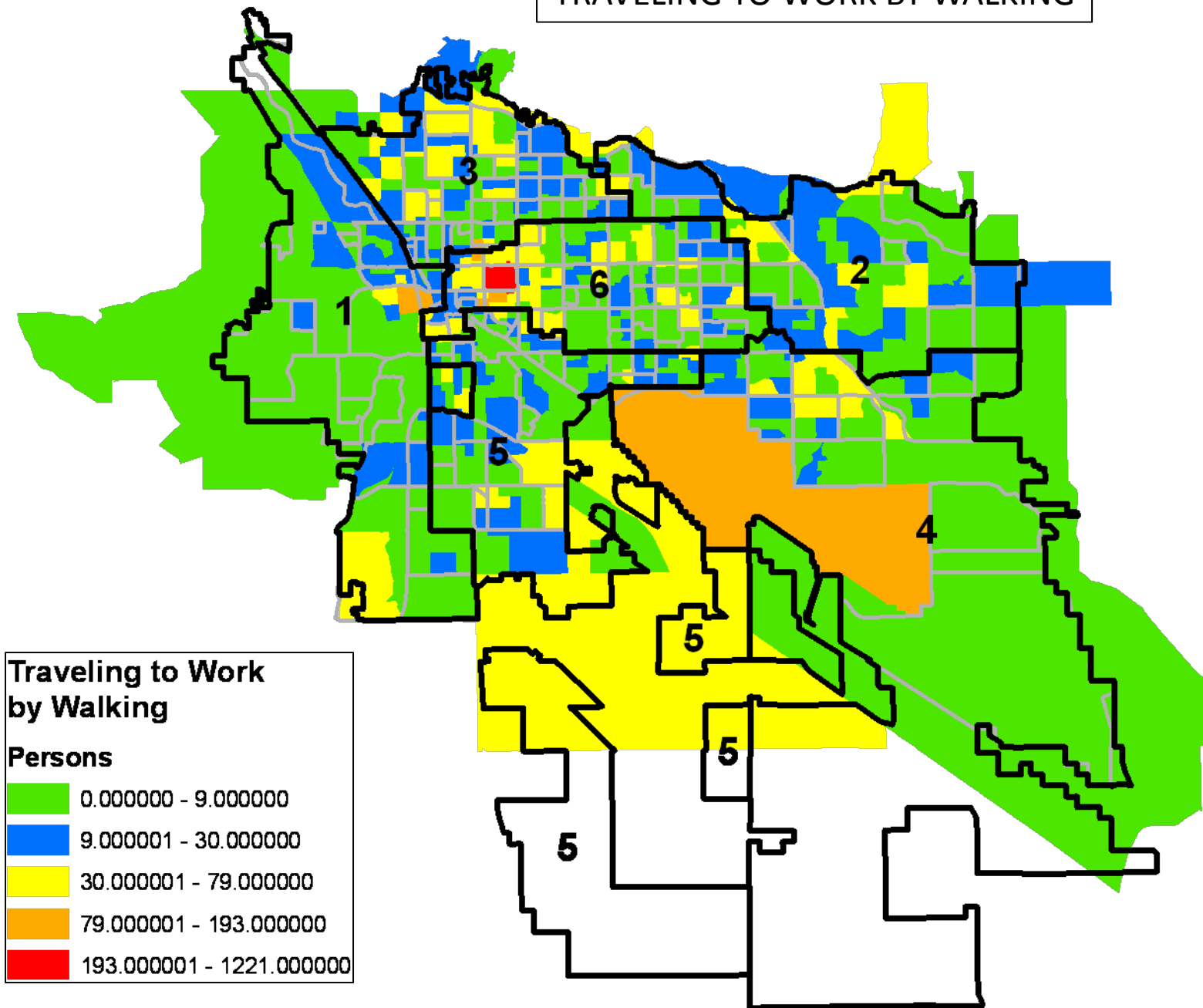


TRAVELING TO WORK BY BICYCLE  
RATE

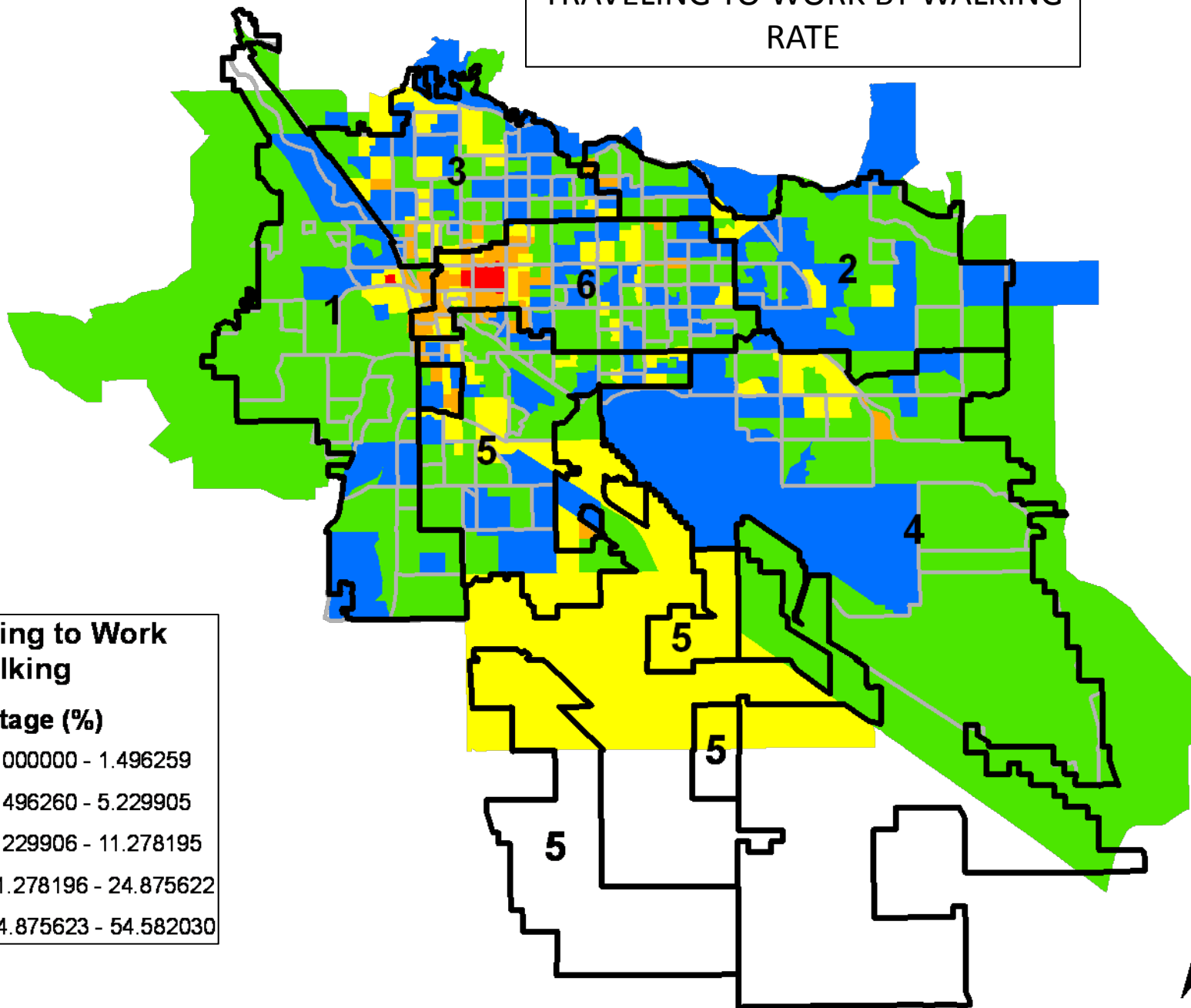
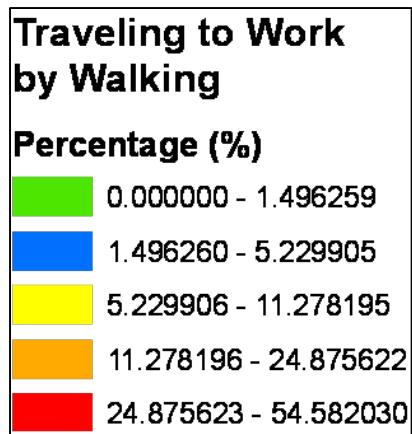


Source: US Census 2000

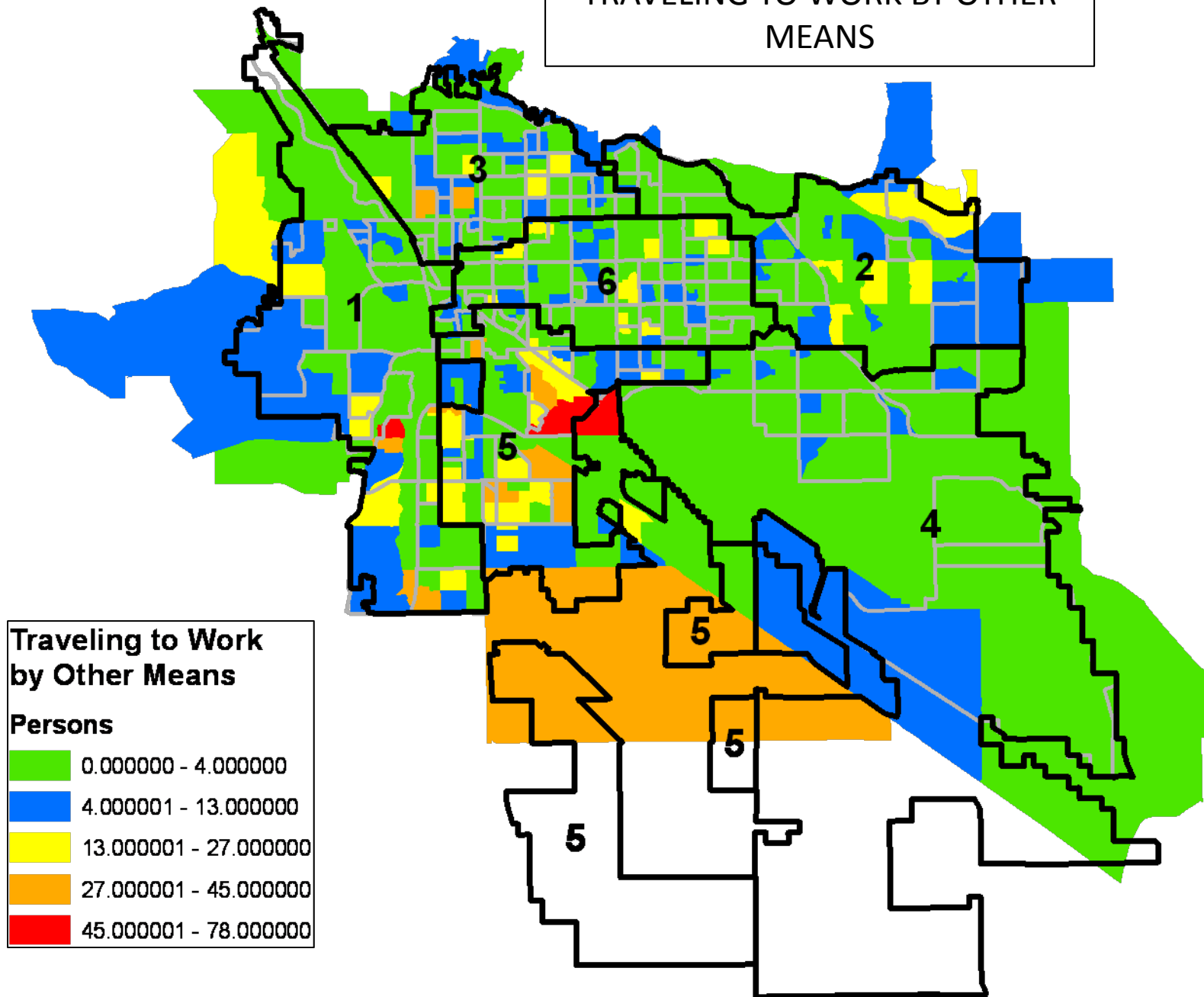
# TRAVELING TO WORK BY WALKING



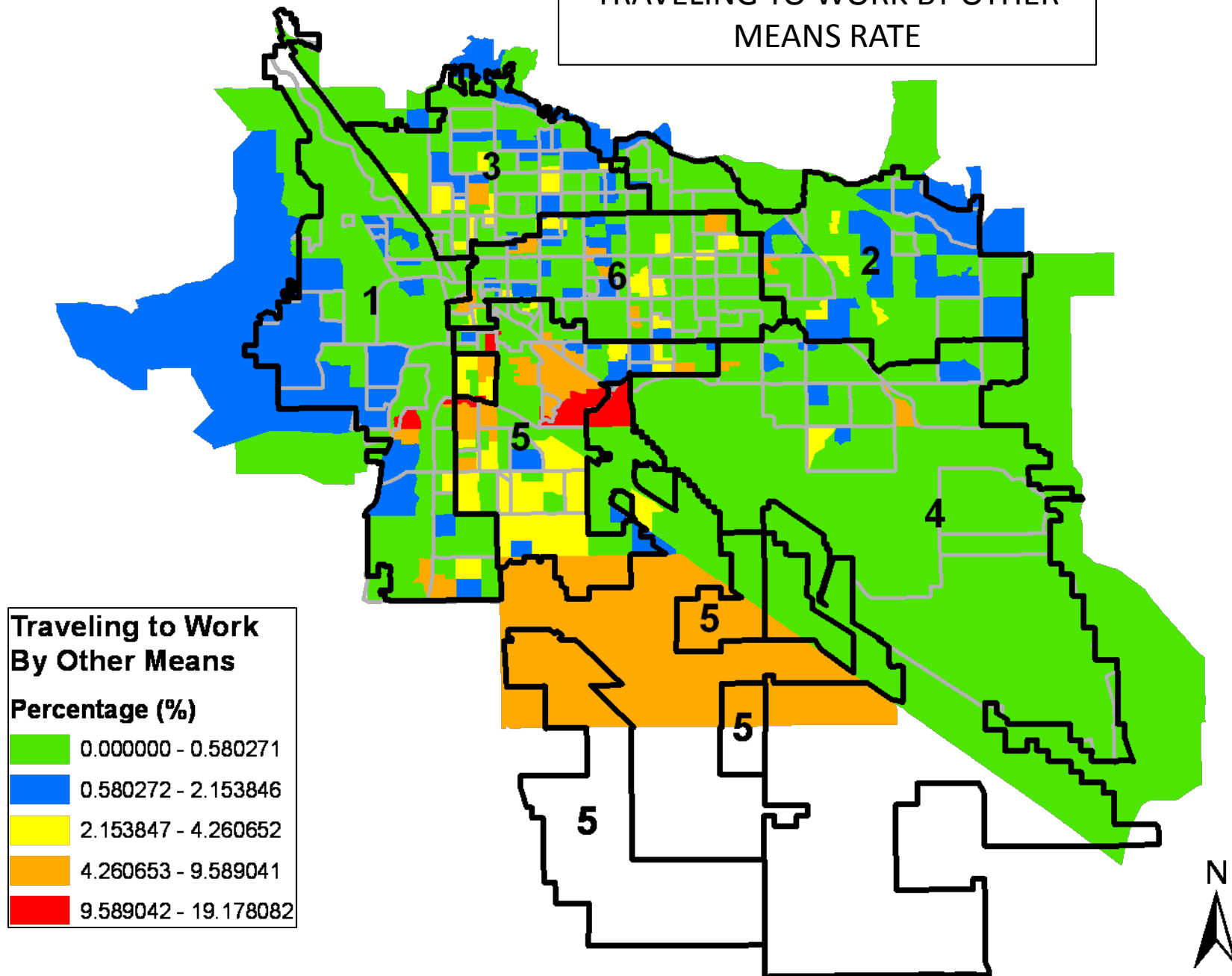
# TRAVELING TO WORK BY WALKING RATE



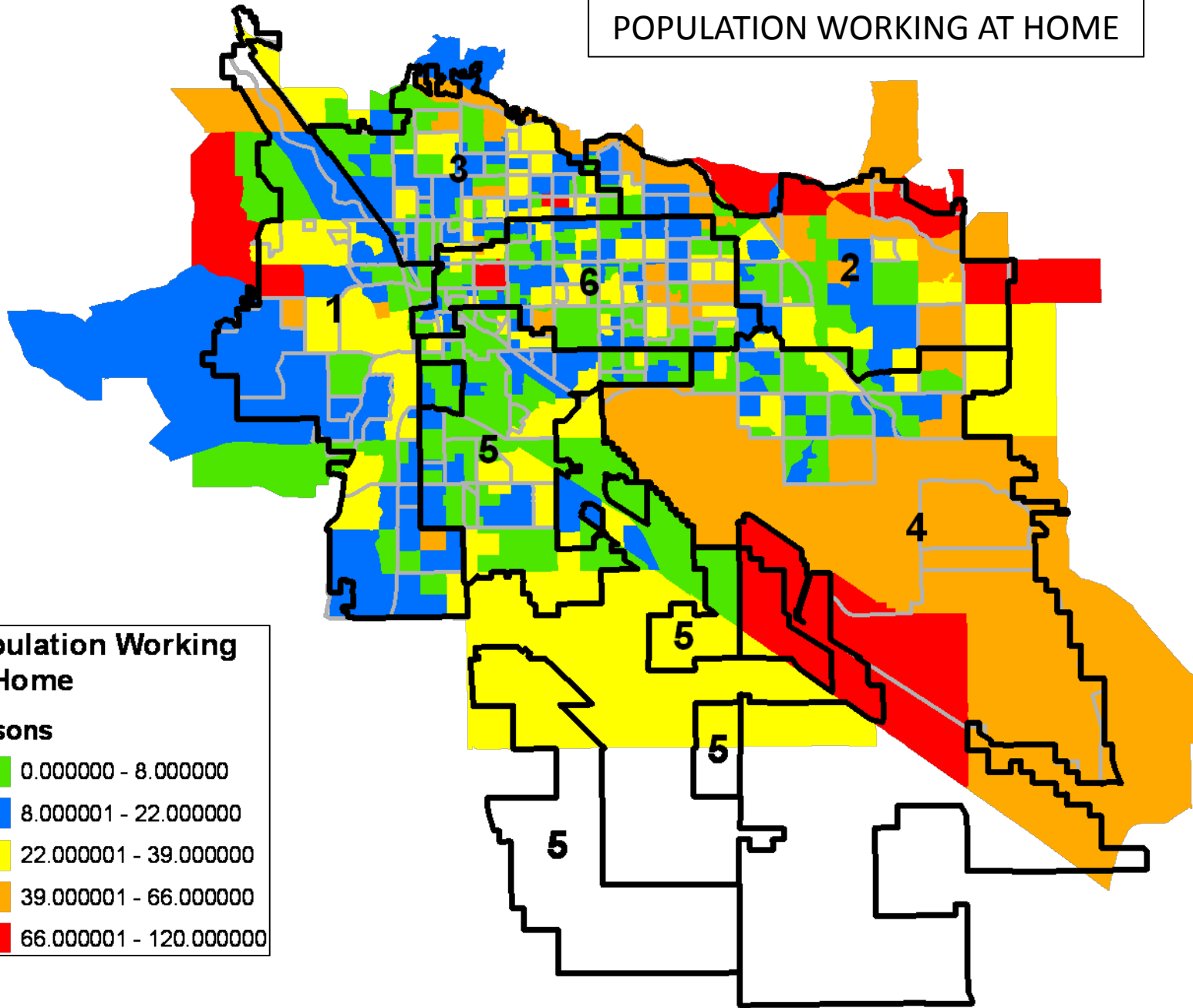
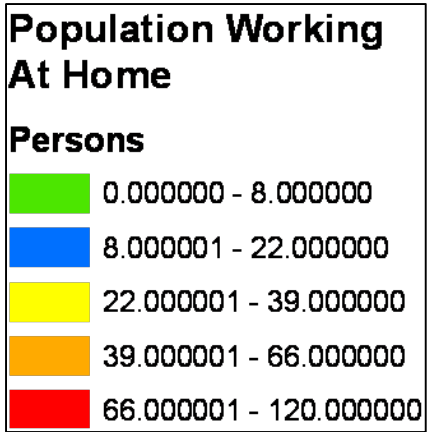
# TRAVELING TO WORK BY OTHER MEANS



TRAVELING TO WORK BY OTHER MEANS RATE

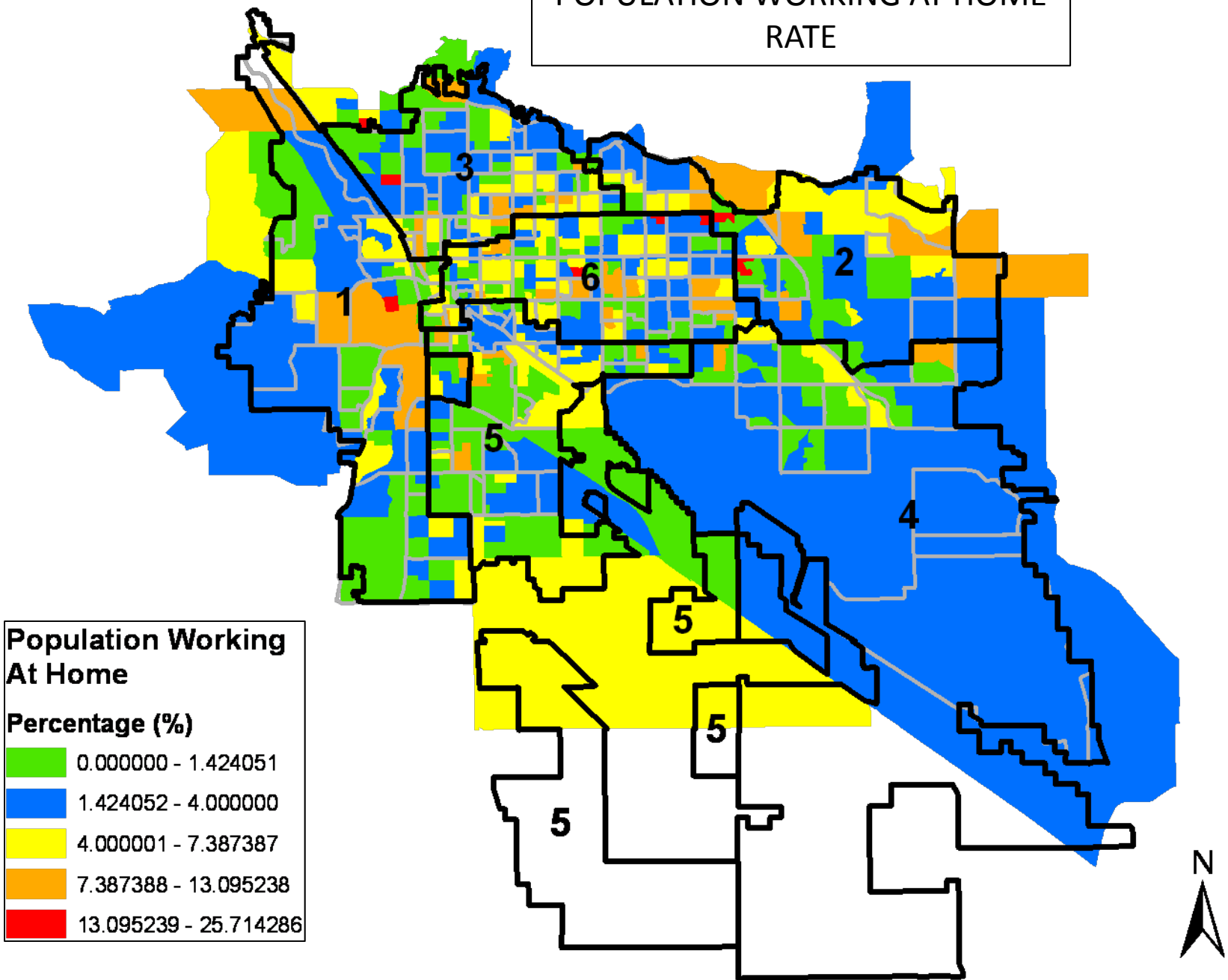


POPULATION WORKING AT HOME



Source: US Census 2000

# POPULATION WORKING AT HOME RATE



Source: US Census 2000